

LEA Name : Berwick Area SD
Address : 500 Line St
Berwick , PA 18603

County : Columbia
AUN Number : 116191103
LEA Type : SD

Annual Financial Report Accuracy Certification Statement

For Fiscal Year Ending
6/30/2020

Pennsylvania Department of Education

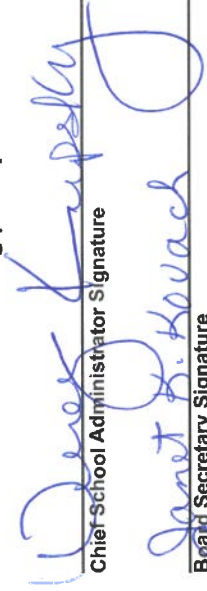
&

Office of Comptroller Operations

PDE-2056: Intermediate Unit

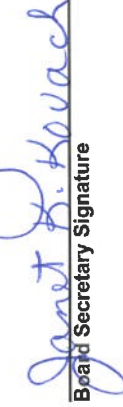
PDE-2057: School District, AVTS/CTC, Charter School,
and Special Program Jointure

CERTIFICATION: By signing this page I agree that the electronic data submitted is a complete and accurate statement of the financial operations and status of the local education agency for the fiscal year. It has been prepared in accordance with generally accepted accounting principles and established Commonwealth of PA reporting guidelines.


Chief-School Administrator Signature

Date

10/29/20


Board Secretary Signature

Date

10/29/2020

Renee M Jilinski

(570)759-6400

Ext :3519

Contact Person Telephone Number

rjilinski@berwicksd.org

(570)759-6439

Contact Person Fax Number

Contact Person E-mail Address

Audit Certification
Annual Financial Report:
For Fiscal Year Ending **6/30/2020**
(Pursuant to PA School Code Section 218(b))

LEA Name : Berwick Area SD
AUN Number : 116191103
County : Columbia

Audit Certification Due:
12/31/2020

This certification is applicable to the Annual Financial Report data submitted through the Consolidated Financial Reporting System on: _____ Date

Auditing Firm:

CERTIFICATION: By signing this page I agree that the financial statements of the school have been properly audited as noted above pursuant to Article XXIV, and in the auditor's professional opinion, the Annual Financial Report (PDE-2057) submitted on the date referenced is materially consistent with the audited financial statements.

Chief School Administrator

Renee M Jilinski
Signature

10/29/20
Date

Renee M Jilinski

Contact Person

rjilinski@berwicksd.org

Contact Person E-mail Address

Board Secretary

Janet K. Kovach
Signature

10/29/2020
Date

(570)759-6400

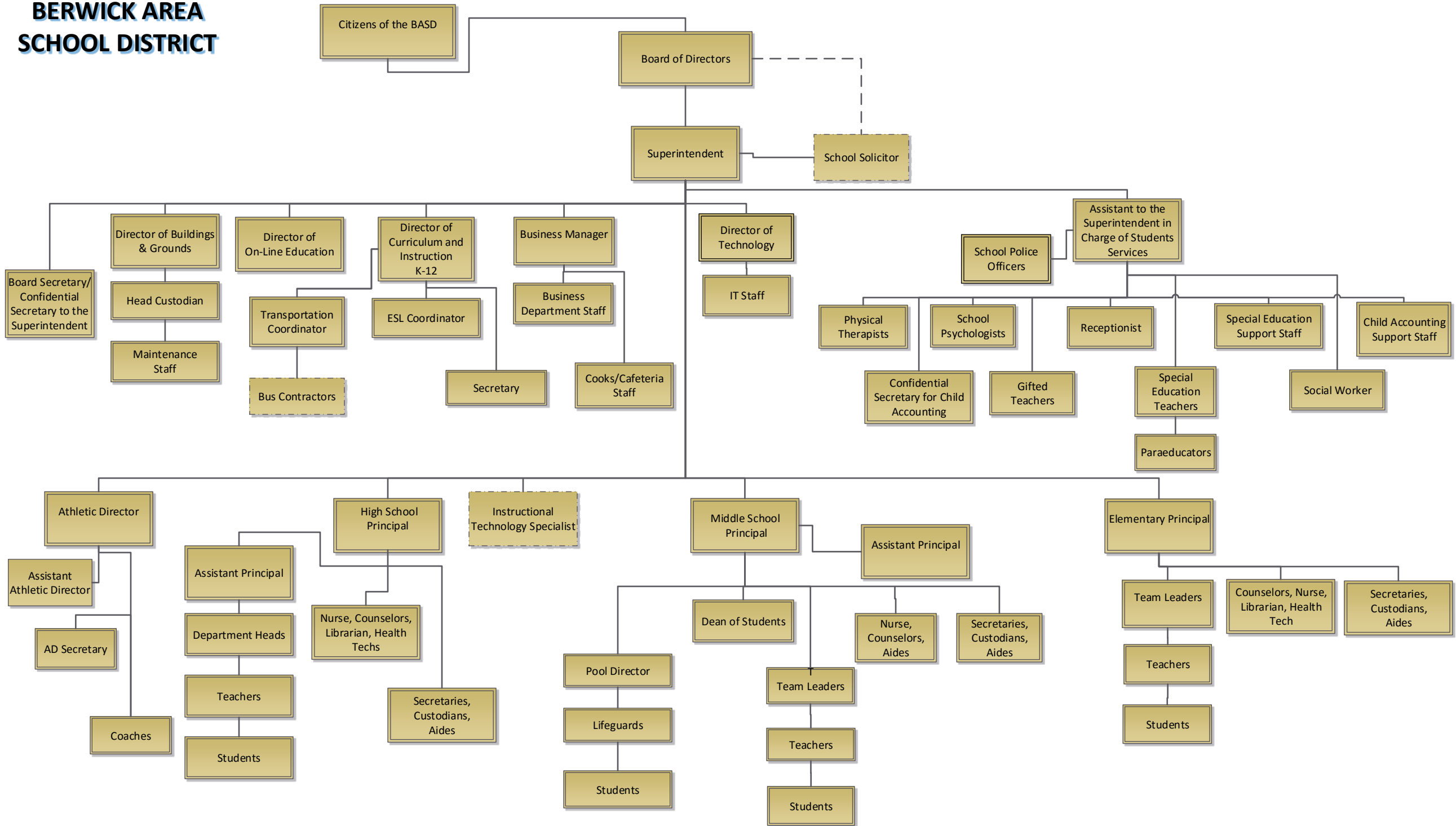
Ext :3519

Contact Person Telephone Number

(570)759-6439

Contact Person Fax Number

BERWICK AREA SCHOOL DISTRICT



Book	Policy Manual
Section	600 Finances
Title	GASB Statement 34
Code	622
Status	Active
Adopted	January 14, 2008
Last Revised	September 14, 2015

Purpose

The Board recognizes the need to implement the required accounting and financial reporting standards stipulated by the Pennsylvania Department of Education.[\[1\]](#)

The primary objectives of implementing the GASB Statement 34 are to assure compliance with state requirements, and properly account for both the financial and economic resources of the district.

Authority

Participation of the school district in any such activity shall be in accordance with Board policy.[\[2\]](#)

Delegation of Responsibility

The responsibility to coordinate the compilation and preparation of all information necessary to implement this policy is delegated to the Business Manager.

The designated individual shall be responsible for implementing the necessary procedures to establish and maintain a fixed asset inventory, including depreciation schedules. Depreciation shall be computed on a straight-line basis over the useful lives of the assets, using an averaging convention or as state and federal law governs. Normal maintenance and repairs shall be charged to expense as incurred; major renewals and betterments that materially extend the life or increase the value of the asset shall be capitalized. A schedule of accumulated depreciation shall be consistent from year to year. The basis for depreciation, including groups of assets and useful lives, shall be in writing and submitted for review to the Board.

The Business Manager shall prepare the required Management Discussion and Analysis (MD&A). The MD&A shall be in the form required by GASB Statement 34 and shall be submitted to the Board for approval, prior to publication.

Prior to submission of the MD&A for Board approval, the district's independent auditors shall review the MD&A, in accordance with SAS No. 52, "Required Supplementary Information".

Guidelines

In order to associate debt with acquired assets and to avoid net asset deficits, any asset that has been acquired with debt proceeds shall be capitalized, regardless of the cost of the asset. The asset life of these assets shall be considered relative to the time of the respective debt amortizations.

For all other assets not acquired by debt proceeds, the dollar value of any single item for inclusion in the fixed assets accounts shall be not less than \$4,000.

The capitalization threshold shall be set at a level that will capture at least eighty percent (80%) of all fixed assets.

The assets listed below do not normally individually meet capitalization threshold criteria:

1. Library books.
2. Classroom texts.
3. Computer equipment.
4. Classroom furniture.

These asset category costs shall be capitalized and depreciated as groups when that group's acquisition cost exceeds the capitalization threshold in any given fiscal year.

For group asset depreciation purposes, the estimated useful life of the group may be based on the weighted average or simple average of the useful life of individual items, or on an assessment of the life of the group as a whole. Periodically, the district shall review the estimated life of groups of assets and adjust the remaining depreciation life of the group.

Assets that fall below the capitalization threshold for GASB 34 reporting purposes may still be significant for insurance, warranty service, and obsolescence/ replacement policy tracking purposes. The district may record and maintain these non-GASB 34 asset inventories in subsidiary ledgers.

- Legal
1. 24 P.S. 613
 2. 24 P.S. 218

Val Number

Description

Justification

41005 Expenditures have been reported in Function 1700 – Higher Education Programs for Secondary Students. Please confirm that these costs were for services provided to your school’s secondary students. NOTE: Adult education programs and Community College sponsorship should be coded to Function 1600.

Exp detail, Fund 10, Function 1700 total \$30,330.33

Function 1700 Tuition Expenditures reported relates to costs of student transportation to higher education program, along with the costs of tuition for those students in STEM dual enrollment for FY20.

50430 SESS - 2160 Social Work Services: SESS Schedule amounts for Special Education vary from prior year by 40% or more. Correct the data or enter a justification.

SESS Schedule 2160: \$9,262.17
Prior Year SESS Schedule 2160: \$6,140.22

Dec 1 child count is used in determining allocation percentage for expenditures relation to the function for the schedule. There was an increase from the PY student count.

50440 SESS - 2260 Instruction and Curriculum Development Services: SESS Schedule amounts for Special Education vary from prior year by 40% or more. Correct the data or enter a justification.

SESS Schedule 2260: \$95,541.90
Prior Year SESS Schedule 2260: \$56,034.59

Districtwide expenditures for various instructional programs previously coded to 2818 we changed to 2260 to align these programs per the appropriate PDE function.

50460 SESS - 2420 Medical Services: SESS Schedule amounts for Special Education vary from prior year by 40% or more. Correct the data or enter a justification.

SESS Schedule 2420: \$936.60
Prior Year SESS Schedule 2420: \$101,545.14

FY20 function changed from 2420 to 2440. Dec 1 child count is used in determining allocation percentage for expenditures relation to the function for the schedule. There was an increase from the PY student count.

50470 SESS - 2440 Nursing Services: SESS Schedule amounts for Special Education vary from prior year by 40% or more. Correct the data or enter a justification.

SESS Schedule 2440: \$141,394.31
Prior Year SESS Schedule 2440: \$0.00

FY20 function changed from 2420 to 2440. Dec 1 child count is used in determining allocation percentage for expenditures relation to the function for the schedule. There was an increase from the PY student count.

Amounts Expressed in Whole Dollars	<u>General Fund</u> <u>(10)</u>	<u>Student Sponsored</u> <u>Activity Fund</u> <u>(21)</u>	<u>Public Purpose Trust</u> <u>(27)</u>	<u>Other Compt Approved</u> <u>(28)</u>	<u>Athletic / Activity</u> <u>(29)</u>
Assets And Deferred Outflows Of Resources					
Assets					
0100 Cash and Cash Equivalents	10,298,329				
0110 Investments					
0120 Taxes Receivable	1,143,198				
0130 Due From Other Funds					
0141 Due From Other Governments					
0142 State Revenue Receivable	1,857,924				
0143 Federal Revenue Receivable	252,972				
0145 Other Intergovernmental Revenue Receivable					
0146 Due from Primary Government					
0147 Due from Component Unit					
0150 Other Receivables	595,116				
0170 Inventories	57,684				
0180 Prepaid Expenses (Expenditures)	2,101				
0190 Other Current Assets					
Total Assets	\$14,207,324				
0910 Deferred Outflows of Resources					
Total Assets And Deferred Outflows Of Resources	\$14,207,324				

Amounts Expressed in Whole Dollars

<u>Capital Reserve (690.</u>	<u>Capital Reserve (1431)</u>	<u>Other Capital Projects</u>	<u>Debt Service</u>	<u>Permanent</u>
<u>1850)</u>	<u>(32)</u>	<u>Fund</u>	<u>(40)</u>	<u>(90)</u>
<u>(31)</u>		<u>(39)</u>		

Assets And Deferred Outflows Of Resources

Assets

- 0100 Cash and Cash Equivalents
- 0110 Investments
- 0120 Taxes Receivable
- 0130 Due From Other Funds
- 0141 Due From Other Governments
- 0142 State Revenue Receivable
- 0143 Federal Revenue Receivable
- 0145 Other Intergovernmental Revenue Receivable
- 0146 Due from Primary Government
- 0147 Due from Component Unit
- 0150 Other Receivables
- 0170 Inventories
- 0180 Prepaid Expenses (Expenditures)
- 0190 Other Current Assets

Total Assets

- 0910 Deferred Outflows of Resources

Total Assets And Deferred Outflows Of Resources

Amounts Expressed in Whole Dollars

Total Governmental Funds

Assets And Deferred Outflows Of Resources

Assets	
0100 Cash and Cash Equivalents	10,298,329
0110 Investments	
0120 Taxes Receivable	1,143,198
0130 Due From Other Funds	
0141 Due From Other Governments	
0142 State Revenue Receivable	1,857,924
0143 Federal Revenue Receivable	252,972
0145 Other Intergovernmental Revenue Receivable	
0146 Due from Primary Government	
0147 Due from Component Unit	
0150 Other Receivables	595,116
0170 Inventories	57,684
0180 Prepaid Expenses (Expenditures)	2,101
0190 Other Current Assets	
Total Assets	\$14,207,324
0910 Deferred Outflows of Resources	
Total Assets And Deferred Outflows Of Resources	\$14,207,324

Amounts Expressed in Whole Dollars

<u>General Fund</u> <u>(10)</u>	<u>Student Sponsored</u> <u>Activity Fund</u> <u>(21)</u>	<u>Public Purpose Trust</u> <u>(27)</u>	<u>Other Compt Approved</u> <u>(28)</u>	<u>Athletic / Activity</u> <u>(29)</u>
------------------------------------	---	--	--	---

Liabilities And Deferred Inflows Of Resources And Fund Balances

Liabilities

0400 Due to Other Funds	
0411 Due to Other Governments	
0412 Due to Primary Government	
0413 Due to Component Unit	
0420 Accounts Payable	2,050,817
0430 Contracts Payable	
0440 Current Portion of Long-Term Debt	
0450 Short-Term Payables	
0461 Accrued Salaries and Benefits	1,443,931
0462 Payroll Deductions and Withholding	189,403
0480 Unearned Revenues	
0490 Other Current Liabilities	

Total Liabilities **\$3,684,151**

0950 Deferred Inflows of Resources	945,307
------------------------------------	---------

Fund Balances

0810 Nonspendable Fund Balance	23,929
0820 Restricted Fund Balance	
0830 Committed Fund Balance	7,000,000
0840 Assigned Fund Balance	
0850 Unassigned Fund Balance	2,553,937

Total Fund Balances **\$9,577,866**

Total Liabilities, Deferred Inflows Of Resources And Fund Balances **\$14,207,324**

Amounts Expressed in Whole Dollars

<u>Capital Reserve (690.</u>	<u>Capital Reserve (1431)</u>	<u>Other Capital Projects</u>	<u>Debt Service</u>	<u>Permanent</u>
<u>1850)</u>	<u>(32)</u>	<u>Fund</u>	<u>(40)</u>	<u>(90)</u>
<u>(31)</u>		<u>(39)</u>		

Liabilities And Deferred Inflows Of Resources And Fund Balances

- Liabilities**
- 0400 Due to Other Funds
 - 0411 Due to Other Governments
 - 0412 Due to Primary Government
 - 0413 Due to Component Unit
 - 0420 Accounts Payable
 - 0430 Contracts Payable
 - 0440 Current Portion of Long-Term Debt
 - 0450 Short-Term Payables
 - 0461 Accrued Salaries and Benefits
 - 0462 Payroll Deductions and Withholding
 - 0480 Unearned Revenues
 - 0490 Other Current Liabilities

Total Liabilities

- 0950 Deferred Inflows of Resources

Fund Balances

- 0810 Nonspendable Fund Balance
- 0820 Restricted Fund Balance
- 0830 Committed Fund Balance
- 0840 Assigned Fund Balance
- 0850 Unassigned Fund Balance

Total Fund Balances

Total Liabilities, Deferred Inflows Of Resources And Fund Balances

Amounts Expressed in Whole Dollars

Total Governmental Funds

Liabilities And Deferred Inflows Of Resources And Fund Balances

Liabilities

0400 Due to Other Funds	
0411 Due to Other Governments	
0412 Due to Primary Government	
0413 Due to Component Unit	
0420 Accounts Payable	2,050,817
0430 Contracts Payable	
0440 Current Portion of Long-Term Debt	
0450 Short-Term Payables	
0461 Accrued Salaries and Benefits	1,443,931
0462 Payroll Deductions and Withholding	189,403
0480 Unearned Revenues	
0490 Other Current Liabilities	

Total Liabilities \$3,684,151

0950 Deferred Inflows of Resources	945,307
------------------------------------	---------

Fund Balances

0810 Nonspendable Fund Balance	23,929
0820 Restricted Fund Balance	
0830 Committed Fund Balance	7,000,000
0840 Assigned Fund Balance	
0850 Unassigned Fund Balance	2,553,937

Total Fund Balances \$9,577,866

Total Liabilities, Deferred Inflows Of Resources And Fund Balances \$14,207,324

Amounts Expressed in Whole Dollars	<u>General Fund</u> <u>(10)</u>	<u>Student Sponsored</u> <u>Activity Fund</u> <u>(21)</u>	<u>Public Purpose Trust</u> <u>(27)</u>	<u>Other Compt Approved</u> <u>(28)</u>	<u>Athletic / Activity</u> <u>(29)</u>
Revenues					
6000 Revenue from Local Sources	19,428,514				
7000 Revenue from State Sources	25,533,591				
8000 Revenue from Federal Sources	1,422,977				
Total Revenues	\$46,385,082				
Expenditures					
1000 Instruction	31,044,227				
2000 Support Services	14,031,768				
3000 Operation of Non-Instructional Services	984,199				
4000 Facilities Acquisition, Construction and Improvement Services	863,790				
5110 Debt Service	1,504,230				
5130 Refund of Prior Year Revenues / Receipts	1,627				
Total Expenditures	\$48,429,841				
Excess (Deficiency) Of Revenues Over Expenditures	(\$2,044,759)				
Other Financing Sources (Uses)					
9110 Face Value of Bonds Issued					
9120 Proceeds from Refunding of Bonds					
9130 Bond Premiums					
9200 Proceeds from Extended-Term Financing					
9300 Interfund Transfers - IN					
9400 Sale of or Compensation for Loss of Fixed Assets					
9710 Transfers from Component Units					
9720 Transfers from Primary Governments					
9910 Other Financing Sources Not Listed in the 9000 Series					
9990 Insurance Recoveries					
5120 Debt Service – Refunded Bonds					
5150 Bond Discounts					
5200 Interfund Transfers – Out					
5300 Transfers Out to Component Units/Primary Governments					
Total Other Financing Sources (Uses)					

Amounts Expressed in Whole Dollars	<u>Capital Reserve (690.</u> <u>1850)</u> <u>(31)</u>	<u>Capital Reserve (1431)</u> <u>(32)</u>	<u>Other Capital Projects</u> <u>Fund</u> <u>(39)</u>	<u>Debt Service</u> <u>(40)</u>	<u>Permanent</u> <u>(90)</u>
Revenues					
6000 Revenue from Local Sources					
7000 Revenue from State Sources					
8000 Revenue from Federal Sources					
Total Revenues					
Expenditures					
1000 Instruction					
2000 Support Services					
3000 Operation of Non-Instructional Services					
4000 Facilities Acquisition, Construction and Improvement Services					
5110 Debt Service					
5130 Refund of Prior Year Revenues / Receipts					
Total Expenditures					
Excess (Deficiency) Of Revenues Over Expenditures					
Other Financing Sources (Uses)					
9110 Face Value of Bonds Issued					
9120 Proceeds from Refunding of Bonds					
9130 Bond Premiums					
9200 Proceeds from Extended-Term Financing					
9300 Interfund Transfers - IN					
9400 Sale of or Compensation for Loss of Fixed Assets					
9710 Transfers from Component Units					
9720 Transfers from Primary Governments					
9910 Other Financing Sources Not Listed in the 9000 Series					
9990 Insurance Recoveries					
5120 Debt Service – Refunded Bonds					
5150 Bond Discounts					
5200 Interfund Transfers – Out					
5300 Transfers Out to Component Units/Primary Governments					
Total Other Financing Sources (Uses)					

Amounts Expressed in Whole Dollars	<u>Total Governmental Funds</u>
Revenues	
6000 Revenue from Local Sources	19,428,514
7000 Revenue from State Sources	25,533,591
8000 Revenue from Federal Sources	1,422,977
Total Revenues	\$46,385,082
Expenditures	
1000 Instruction	31,044,227
2000 Support Services	14,031,768
3000 Operation of Non-Instructional Services	984,199
4000 Facilities Acquisition, Construction and Improvement Services	863,790
5110 Debt Service	1,504,230
5130 Refund of Prior Year Revenues / Receipts	1,627
Total Expenditures	\$48,429,841
Excess (Deficiency) Of Revenues Over Expenditures	(\$2,044,759)

Other Financing Sources (Uses)	
9110 Face Value of Bonds Issued	
9120 Proceeds from Refunding of Bonds	
9130 Bond Premiums	
9200 Proceeds from Extended-Term Financing	
9300 Interfund Transfers - IN	
9400 Sale of or Compensation for Loss of Fixed Assets	
9710 Transfers from Component Units	
9720 Transfers from Primary Governments	
9910 Other Financing Sources Not Listed in the 9000 Series	
9990 Insurance Recoveries	
5120 Debt Service – Refunded Bonds	
5150 Bond Discounts	
5200 Interfund Transfers – Out	
5300 Transfers Out to Component Units/Primary Governments	
Total Other Financing Sources (Uses)	

Amounts Expressed in Whole Dollars	<u>General Fund</u> <u>(10)</u>	<u>Student Sponsored</u> <u>Activity Fund</u> <u>(21)</u>	<u>Public Purpose Trust</u> <u>(27)</u>	<u>Other Compt Approved</u> <u>(28)</u>	<u>Athletic / Activity</u> <u>(29)</u>
Special And Extraordinary Items					
9920 Special Items – Gains					
9930 Extraordinary Items – Gains					
5520 Special Items – Losses					
5530 Extraordinary Items – Losses					
Net Change In Fund Balances	(\$2,044,759)				
Fund Balance					
0001 Fund Balance - Beginning of Fiscal Year	11,622,625				
Fund Balance - End Of Year	\$9,577,866				

Amounts Expressed in Whole Dollars	<u>Capital Reserve (690.</u> <u>1850)</u> <u>(31)</u>	<u>Capital Reserve (1431)</u> <u>(32)</u>	<u>Other Capital Projects</u> <u>Fund</u> <u>(39)</u>	<u>Debt Service</u> <u>(40)</u>	<u>Permanent</u> <u>(90)</u>
Special And Extraordinary Items					
9920 Special Items – Gains					
9930 Extraordinary Items – Gains					
5520 Special Items – Losses					
5530 Extraordinary Items – Losses					
Net Change In Fund Balances					
Fund Balance					
0001 Fund Balance - Beginning of Fiscal Year					
Fund Balance - End Of Year					

Amounts Expressed in Whole Dollars	<u>Total Governmental Funds</u>
Special And Extraordinary Items	
9920 Special Items – Gains	
9930 Extraordinary Items – Gains	
5520 Special Items – Losses	
5530 Extraordinary Items – Losses	
Net Change In Fund Balances	(\$2,044,759)
Fund Balance	
0001 Fund Balance - Beginning of Fiscal Year	11,622,625
Fund Balance - End Of Year	\$9,577,866

Amounts Expressed in Whole Dollars	<u>Food Service</u> <u>(51)</u>	<u>Child Care</u> <u>Operations</u> <u>(52)</u>	<u>Other Enterprise</u> <u>(58)</u>	<u>TOTAL</u>	<u>Internal Service</u> <u>(60)</u>
Assets And Deferred Outflows Of Resources					
Current Assets					
0100 Cash and Cash Equivalents	211,672		3,008	214,680	
0110 Investments					
0130 Due From Other Funds					
0141 Due From Other Governments					
0142 State Revenue Receivable	3,847			3,847	
0143 Federal Revenue Receivable	91,576			91,576	
0146 Due from Primary Government					
0147 Due from Component Unit					
0150 Other Receivables					
0170 Inventories	23,671			23,671	
0180 Prepaid Expenses (Expenditures)					
0190 Other Current Assets					
Total Current Assets	\$330,766		\$3,008	\$333,774	
Noncurrent Assets					
0211 Land					
0212 Site Improvements (Net)					
0220 Buildings and Building Improvements (Net)					
0230 Machinery, Equipment and Furniture (Net)	187,238			187,238	
0250 Construction in Progress					
0260 Long Term Prepayments					
0290 Other Noncurrent Assets					
Total Noncurrent Assets	\$187,238			\$187,238	
0910 Deferred Outflows of Resources					
Total Assets And Deferred Outflows Of Resources	\$518,004		\$3,008	\$521,012	

Amounts Expressed in Whole Dollars	<u>Food Service</u> <u>(51)</u>	<u>Child Care</u> <u>Operations</u> <u>(52)</u>	<u>Other Enterprise</u> <u>(58)</u>	<u>TOTAL</u>	<u>Internal Service</u> <u>(60)</u>
Liabilities And Deferred Inflows Of Resources And Net Position					
Current Liabilities					
0400 Due to Other Funds					
0411 Due to Other Governments					
0413 Due to Component Unit					
0420 Accounts Payable	33,616		1,300	34,916	
0430 Contracts Payable					
0440 Current Portion of Long-Term Debt					
0450 Short-Term Payables					
0461 Accrued Salaries and Benefits					
0462 Payroll Deductions and Withholding	9,220			9,220	
0480 Unearned Revenues	28,713			28,713	
0490 Other Current Liabilities					
Total Current Liabilities	\$71,549		\$1,300	\$72,849	
Noncurrent Liabilities					
0510 Bonds Payable					
0520 Extended-Term Financing Agreements Payable					
0530 Lease-Purchase Obligations					
0540 Accumulated Compensated Absences					
0550 Authority Lease Obligations					
0560 Other Post-Employment Benefits (OPEB)					
0570 Net Pension Liability					
0599 Other Noncurrent Liabilities					
Total Noncurrent Liabilities					
Total Liabilities	\$71,549		\$1,300	\$72,849	
0950 Deferred Inflows of Resources					
Net Position					
0791 Net Investment in Capital Assets		187,238		187,238	
0008 Restricted Net Position (0792 – 0798)					
0799 Unrestricted Net Position		259,217	1,708	260,925	
Total Net Position		\$446,455	\$1,708	\$448,163	
Total Liabilities And Deferred Inflows Of Resources And Net Position	\$518,004		\$3,008	\$521,012	

Amounts Expressed in Whole Dollars	<u>Food Service</u> <u>(51)</u>	<u>Child Care Operations</u> <u>(52)</u>	<u>Other Enterprise</u> <u>(58)</u>	<u>TOTAL</u>	<u>Internal Service</u> <u>(60)</u>
Operating Revenues					
6600 Food Service Revenue	180,718			180,718	
0071 Charges for Services					
0072 Other Operating Revenue			5,380	5,380	
Total Operating Revenues	\$180,718		\$5,380	\$186,098	
Operating Expenses					
100 Personnel Services – Salaries	167,396		6,373	173,769	
200 Personnel Services – Employee Benefits	154,428		1,197	155,625	
300 Purchased Professional and Technical Services	10,782			10,782	
400 Purchased Property Services					
500 Other Purchased Services	1,034,186			1,034,186	
600 Supplies	131,270			131,270	
740 Depreciation	19,306			19,306	
810 Dues and Fees	239			239	
890 Miscellaneous Expenditures					
Total Operating Expenses	\$1,517,607		\$7,570	\$1,525,177	
Operating Income (Loss)	(\$1,336,889)		(\$2,190)	(\$1,339,079)	
Non Operating Revenues (Expenses)					
6500 Earnings on Investments	1,350		(1)	1,349	
6920 Contributions and Donations from Private Sources					
6930 Gains or Losses on Sale of Fixed Assets					
6991 Refunds of a Prior Year Expenditure					
7000 Revenue from State Sources	50,154			50,154	
8000 Revenue from Federal Sources	1,153,045			1,153,045	
9990 Insurance Recoveries					
820 Claims and Judgments Against the LEA					
830 Interest					
TOTAL Non Operating Revenues (Expenses)	\$1,204,549		(\$1)	\$1,204,548	
Income (Loss) Before Contributions And Transfers	(\$132,340)		(\$2,191)	(\$134,531)	

Amounts Expressed in Whole Dollars	<u>Food Service</u> <u>(51)</u>	<u>Child Care Operations</u> <u>(52)</u>	<u>Other Enterprise</u> <u>(58)</u>	<u>TOTAL</u>	<u>Internal Service</u> <u>(60)</u>
Contributions, Transfers, and Special and Extraordinary Items					
5200 Interfund Transfers – Out					
5300 Transfers Out to Component Units/Primary Governments					
5520 Special Items – Losses					
5530 Extraordinary Items – Losses					
9300 Interfund Transfers - IN					
9500 Capital Contributions					
9700 Transfers IN From Component Units/Primary Governments					
9920 Special Items – Gains					
9930 Extraordinary Items – Gains					
Change In Net Position	(\$132,340)		(\$2,191)	(\$134,531)	
0002 Net Position - Beginning of Fiscal Year	578,797		3,896	582,693	
0003 Accounting Changes / Residual Equity Transfers					
Net Position - End Of Year	\$446,457		\$1,705	\$448,162	

Amounts Expressed in Whole Dollars	<u>Food Service</u> <u>(51)</u>	<u>Child Care Operations</u> <u>(52)</u>	<u>Other Enterprise</u> <u>(58)</u>	<u>TOTAL</u>	<u>Internal Service(60)</u>
Cash Flows From Operating Activities					
0011 Cash Receipts From Users	204,979		6,706	211,685	
0012 Cash Receipts From Assessments Made to Other Funds					
0013 Cash Receipts From Earnings on Investments					
0014 Cash Receipts From Other Operating Revenue					
0015 Cash Payments To Employees For Services	318,526		7,263	325,789	
0016 Cash Payments For Insurance Claims					
0017 Cash Payments To Suppliers For Goods and Services	1,196,834			1,196,834	
0018 Cash Payments For Other Operating Expenses					
Net Cash Provided By (Used For) Operating Activities	(\$1,310,381)		(\$557)	(\$1,310,938)	
Cash Flows From Non-Capital Financing Activities					
0021 Receipts From Local Sources - 6000					
0022 Receipts From State Sources - 7000	47,821			47,821	
0023 Receipts From Federal Sources -8000	1,091,738			1,091,738	
0024 Notes and Loans Received (Repaid)					
0025 Interest Paid on Notes/Loans - 5100-830					
0026 Operating Transfers In (Out)/Residual Equity Trans					
0027 Operating Transfers In (Out) Primary Government / Comp Unit					
0028 Receipts From Refund of Prior Year Expenditures - 6991					
0029 Special and Extraordinary Gains (losses)					
0030 Receipts from Insurance Recoveries -9990					
Net Cash Prov By (Used for) Non-Capital Financing Activities	\$1,139,559			\$1,139,559	
Cash Flows From Capital and Related Financing Activities					
0031 Payments For Fac Acq, Const, and Imp - 4000					
0032 Gain / (Loss) on Sale of Fixed Assets - 6930					
0033 Proceeds From Extended Term Financing - 9200					
0034 Principal Paid on Financing Agreements					
0035 Interest Paid on Financing Agreements - 5100-830					
0036 (Inc) Dec in Contributed Capital					
Net Cash Prov By (Used for) Capital and Related Financing Activities					
Cash Flows From Investing Activities					
0041 Earnings on Investments - 6500	1,350			1,350	
0042 Purchase of Inv Securities / Deposits to Inv Pools					
0043 Receipts From Investment Pool Withdrawals					
0044 Proceeds from Sale and Maturity of Inv Securities					

LEA : 116191103 Berwick Area SD

Printed 10/29/2020 1:37:07 PM

0045 Loans Received (Paid)

Net Cash Prov By (Used for) Investing Activities	\$1,350	\$1,350
---	----------------	----------------

	<u>Food Service</u> <u>(51)</u>	<u>Child Care Operations</u> <u>(52)</u>	<u>Other Enterprise</u> <u>(58)</u>	<u>TOTAL</u>	<u>Internal Service</u> <u>(60)</u>
Net Increase (Decrease) in Cash Flows	(169,472)		(557)	(170,029)	
0004 Cash and Cash Equivalents Beginning of Year	381,143		3,565	384,708	
Cash and Cash Equivalents at Year End	\$211,671		\$3,008	\$214,679	

Reconciliation of Operating Income (Loss) To Net Cash Provided by (Used For) Operating Activities

0005 Operating Income (Loss) per REP	(1,336,889)		(2,190)	(1,339,079)	
Adjustments					
0051 Depreciation and Net Amortization	19,306			19,306	
0052 Provision for Uncollectible Accounts					
0053 Other Adjustments					
Effect of Changes in Assets, Liabilities, Deferred Outflows and Deferred Inflows					
0054 (Inc) Dec In Accounts Receivable (0120-0150)	18,058		25	18,083	
0055 Advances to Other Funds (0160)					
0056 (Inc) Dec in Inventories (0170)	14,795			14,795	
0057 (Inc) Dec in Prepaid Expenses (0180)					
0058 (Inc) Dec in Other Current or Noncurrent Assets					
0064 Deferred Outflows (0910)					
0059 Inc (Dec) in Accounts Payable (0400-0450)	(35,152)		1,300	(33,852)	
0060 Inc (Dec) in Accrued Salaries/Benefits (0461)	3,299		307	3,606	
0065 Inc (Dec) in Net Pension Liabilities (0570)					
0066 Inc (Dec) in Other Postemp Benefit Oblig (0560)					
0061 Inc (Dec) in Payroll Deductions/Withholding (0462)					
0062 Inc (Dec) in Unearned Revenue (0480)	6,206			6,206	
0063 Inc (Dec) in Other Current or Noncurrent Liabilities					
0067 Deferred Inflows (0950)					
Total Adjustments	\$26,512		\$1,632	\$28,144	
Cash Provided By (Used for) Total	(\$1,310,377)		(\$558)	(\$1,310,935)	

COMBINED STATEMENT OF CASH FLOWS
SCHEDULE OF NONCASH INVESTING, CAPITAL, AND FINANCING ACTIVITIES

Explanation of Transaction and Balance Sheet Effect	Amount
Total	

LEA : 116191103 Berwick Area SD

Printed 10/29/2020 1:37:23 PM

Amounts Expressed in Whole Dollars

	<u>Private Purpose Trust</u> <u>(71)</u>	<u>Investment Trust</u> <u>(72)</u>	<u>Pension Trust</u> <u>(73)</u>	<u>Student Activity Custodial</u> <u>(81)</u>
Assets And Deferred Outflows Of Resources				
Assets				
0100 Cash and Cash Equivalents				423,434
0110 Investments	435,579			
0130 Due From Other Funds				
0140 Due from Other Governments, Primary Government and Component Units				
0150 Other Receivables				12,167
0170 Inventories				
0180 Prepaid Expenses (Expenditures)				
0190 Other Current Assets				
0220 Buildings and Building Improvements (Net)				
0230 Machinery, Equipment and Furniture (Net)				
Total Assets	\$435,579			\$435,601
0910 Deferred Outflows of Resources				
Total Assets And Deferred Outflows Of Resources	\$435,579			\$435,601

LEA : 116191103 Berwick Area SD

Printed 10/29/2020 1:37:23 PM

Amounts Expressed in Whole Dollars	<u>Other Custodial</u> <u>(89)</u>	<u>Fiduciary Component Units</u> <u>(98)</u>	<u>Total Fiduciary Funds</u>
Assets And Deferred Outflows Of Resources			
Assets			
0100 Cash and Cash Equivalents	85,958		509,392
0110 Investments			435,579
0130 Due From Other Funds			
0140 Due from Other Governments, Primary Government and Component Units			
0150 Other Receivables			12,167
0170 Inventories			
0180 Prepaid Expenses (Expenditures)			
0190 Other Current Assets			
0220 Buildings and Building Improvements (Net)			
0230 Machinery, Equipment and Furniture (Net)			
Total Assets	\$85,958		\$957,138
0910 Deferred Outflows of Resources			
Total Assets And Deferred Outflows Of Resources	\$85,958		\$957,138

LEA : 116191103 Berwick Area SD

Printed 10/29/2020 1:37:23 PM

Amounts Expressed in Whole Dollars	<u>Private Purpose Trust</u> (71)	<u>Investment Trust</u> (72)	<u>Pension Trust</u> (73)	<u>Student Activity Custodial</u> (81)
Liabilities, Deferred Inflows Of Resources And Net Position				
Liabilities				
0400 Due to Other Funds				
0410 Due to Other Governments, Primary Government and Component Units				
0420 Accounts Payable				15,067
0430 Contracts Payable				
0450 Short-Term Payables				
0460 Payroll Accruals and Withholdings				
0480 Unearned Revenues				
0490 Other Current Liabilities				420,534
Total Liabilities				\$435,601
0950 Deferred Inflows of Resources				
Net Position				
0791 Net Investment in Capital Assets				
0009 Restricted Net Position (0792 – 0798)	435,579			
0799 Unrestricted Net Position				
Total Net Position	\$435,579			
Total Liabilities, Deferred Inflows Of Resources And Net Position	\$435,579			\$435,601

LEA : 116191103 Berwick Area SD

Printed 10/29/2020 1:37:23 PM

Amounts Expressed in Whole Dollars	<u>Other Custodial</u> <u>(89)</u>	<u>Fiduciary Component Units</u> <u>(98)</u>	<u>Total Fiduciary Funds</u>
Liabilities, Deferred Inflows Of Resources And Net Position			
Liabilities			
0400 Due to Other Funds			
0410 Due to Other Governments, Primary Government and Component Units			
0420 Accounts Payable	543		15,610
0430 Contracts Payable			
0450 Short-Term Payables			
0460 Payroll Accruals and Withholdings			
0480 Unearned Revenues			
0490 Other Current Liabilities	85,415		505,949
Total Liabilities	\$85,958		\$521,559
0950 Deferred Inflows of Resources			
Net Position			
0791 Net Investment in Capital Assets			
0009 Restricted Net Position (0792 – 0798)			435,579
0799 Unrestricted Net Position			
Total Net Position			\$435,579
Total Liabilities, Deferred Inflows Of Resources And Net Position	\$85,958		\$957,138

Amounts Expressed in Whole Dollars	<u>Private Purpose Trust</u> (71)	<u>Investment Trust</u> (72)	<u>Pension Trust</u> (73)	<u>Student Activity</u> <u>Custodial</u> (81)	<u>Other Custodial</u> (89)	<u>Fiduciary Component</u> <u>Units</u> (98)
Additions						
0091 Gifts and Contributions	3,737					
0095 Net Investment Earnings	7,018					
0092 Other Additions	10,020					
Deductions						
0093 Scholarships Awarded	18,900					
0094 Other Deductions	7,796					
Change In Net Position	(\$5,921)					
0006 Net Position – Beginning of Fiscal Year	441,500					
0007 Net Position Held in Trust for Pension Benefits						
Net Position - End of Fiscal Year	\$435,579					

Amounts Expressed in Whole Dollars	<u>Total Fiduciary Funds</u>
Additions	
0091 Gifts and Contributions	3,737
0095 Net Investment Earnings	7,018
0092 Other Additions	10,020
Deductions	
0093 Scholarships Awarded	18,900
0094 Other Deductions	7,796
Change In Net Position	(\$5,921)
0006 Net Position – Beginning of Fiscal Year	441,500
0007 Net Position Held in Trust for Pension Benefits	
Net Position - End of Fiscal Year	\$435,579

	<u>Revenue Reported In Current Year</u>	<u>Current Year Tax Accrual</u>	<u>Prior Year Tax Accrual</u>	<u>Taxes Collected In Current Year</u>
<u>Revenue from Local Sources</u>				
6111 Current Real Estate Taxes	14,779,411.75			14,779,411.75
6112 Interim Real Estate Taxes	45,050.95			45,050.95
6113 Public Utility Realty Taxes	16,408.96			16,408.96
6114 Payments in Lieu of Current Taxes - State / Local	5,536.16			5,536.16
6143 Current Act 511 Local Services Taxes	44,856.97			44,856.97
6151 Current Act 511 Earned Income Taxes	2,204,258.80			2,204,258.80
6153 Current Act 511 Real Estate Transfer Taxes	225,165.38			225,165.38
6411 Delinquent Real Estate Taxes	722,042.99			722,042.99
6420 Delinquent Per Capita Taxes, Section 679	769.48			769.48
6440 Delinquent Local Enabling Taxes - Flat Rate Assessments	2,308.41			2,308.41
6500 Earnings on Investments	272,988.73			
6700 Revenues from LEA Activities	63,855.63			
6832 Federal IDEA Revenue Received as Pass Through	638,275.10			
6910 Rentals	2,819.36			
6920 Contributions and Donations from Private Sources	287,566.59			
6941 Regular Day School Tuition	10,422.50			
6942 Summer School Tuition	(175.00)			
6944 Receipts from Other LEAs in Pennsylvania - Education	43,964.50			
6991 Refunds of a Prior Year Expenditure	8,260.78			
6992 Energy Efficiency Revenues and Incentives	753.17			
6999 Other Revenues Not Specified Above	53,972.76			
TOTAL Revenue from Local Sources	\$19,428,513.97			\$18,045,809.85

**Revenue Reported
In Current Year**

Revenue from State Sources

7111 Basic Education Funding-Formula	15,022,542.30		
7112 Basic Education Funding-Social Security	911,867.61		
7160 Tuition for Orphans Subsidy	13,197.40		
7220 Vocational Education	4,683.58		
7250 Migratory Children	80.00		
7271 Special Education funds for School-Aged Pupils	2,322,012.70		
7311 Pupil Transportation Subsidy	819,564.96		
7312 Nonpublic and Charter School Pupil Transportation Subsidy	21,175.00		
7320 Rental and Sinking Fund Payments / Building Reimbursement Subsidy	343,915.71		
7330 Health Services (Medical, Dental, Nurse, Act 25)	52,270.57		
7340 State Property Tax Reduction Allocation	1,095,777.53		
7361 School Safety and Security Grants	40,000.00		
7505 Ready to Learn Block Grant	549,482.00		
7506 PAsmart Grants	(7,907.23)		
7599 Other State Revenue Not Listed Elsewhere in the 7000 Series	250.00		
7820 State Share of Retirement Contributions	4,344,678.79		
TOTAL Revenue from State Sources	\$25,533,590.92		

**Revenue Reported
In Current Year**

Revenue from Federal Sources

8514 NCLB, Title I - Improving the Academic Achievement of the Disadvantaged	844,437.38		
8515 NCLB, Title II - Preparing, Training and Recruiting High Quality Teachers and Principals	143,385.00		
8516 NCLB, Title III - Language Instruction for Limited English Proficient and Immigrant Students	10,768.00		
8517 NCLB, Title IV - 21St Century Schools	142,898.57		
8810 School-Based Access Medicaid Reimbursement Program (SBAP) Reimbursements (Access)	258,767.90		
8820 Medical Assistance Reimbursement for Administrative Claiming (Quarterly) Program	22,720.41		
TOTAL Revenue from Federal Sources	\$1,422,977.26		
TOTAL FROM ALL SOURCES	\$46,385,082.15		\$18,045,809.85

LEA : 116191103 Berwick Area SD

Printed 10/29/2020 1:37:52 PM

	<u>General Fund (10)</u>	<u>Student Sponsored Activity Fund (21)</u>	<u>Public Purpose Trust (27)</u>	<u>Other Compt Approved (28)</u>	<u>Athletic / Activity (29)</u>	<u>Capital Reserve (690, 1850) (31)</u>
6000 Revenue from Local Sources						
6111 Current Real Estate Taxes	14,779,411.75					
6112 Interim Real Estate Taxes	45,050.95					
6113 Public Utility Realty Taxes	16,408.96					
6114 Payments in Lieu of Current Taxes - State / Local	5,536.16					
6143 Current Act 511 Local Services Taxes	44,856.97					
6151 Current Act 511 Earned Income Taxes	2,204,258.80					
6153 Current Act 511 Real Estate Transfer Taxes	225,165.38					
6411 Delinquent Real Estate Taxes	722,042.99					
6420 Delinquent Per Capita Taxes, Section 679	769.48					
6440 Delinquent Local Enabling Taxes - Flat Rate Assessments	2,308.41					
6500 Earnings on Investments	272,988.73					
6700 Revenues from LEA Activities	63,855.63					
6832 Federal IDEA Revenue Received as Pass Through	638,275.10					
6910 Rentals	2,819.36					
6920 Contributions and Donations from Private Sources	287,566.59					
6941 Regular Day School Tuition	10,422.50					
6942 Summer School Tuition	(175.00)					
6944 Receipts from Other LEAs in Pennsylvania - Education	43,964.50					
6991 Refunds of a Prior Year Expenditure	8,260.78					
6992 Energy Efficiency Revenues and Incentives	753.17					
6999 Other Revenues Not Specified Above	53,972.76					
6000 Total Revenue from Local Sources	\$19,428,513.97					
7000 Revenue from State Sources						
7111 Basic Education Funding-Formula	15,022,542.30					
7112 Basic Education Funding-Social Security	911,867.61					
7160 Tuition for Orphans Subsidy	13,197.40					
7220 Vocational Education	4,683.58					
7250 Migratory Children	80.00					
7271 Special Education funds for School-Aged Pupils	2,322,012.70					
7311 Pupil Transportation Subsidy	819,564.96					
7312 Nonpublic and Charter School Pupil Transportation Subsidy	21,175.00					
7320 Rental and Sinking Fund Payments / Building Reimbursement Subsidy	343,915.71					
7330 Health Services (Medical, Dental, Nurse, Act 25)	52,270.57					
7340 State Property Tax Reduction Allocation	1,095,777.53					
7361 School Safety and Security Grants	40,000.00					

LEA : 116191103 Berwick Area SD

Printed 10/29/2020 1:37:52 PM

	<u>Capital Reserve</u> <u>(1431) (32)</u>	<u>Other Capital</u> <u>Projects Fund (39)</u>	<u>Debt Service (40)</u>	<u>Permanent (90)</u>	<u>Total</u>
6000 Revenue from Local Sources					
6111 Current Real Estate Taxes					14,779,411.75
6112 Interim Real Estate Taxes					45,050.95
6113 Public Utility Realty Taxes					16,408.96
6114 Payments in Lieu of Current Taxes - State / Local					5,536.16
6143 Current Act 511 Local Services Taxes					44,856.97
6151 Current Act 511 Earned Income Taxes					2,204,258.80
6153 Current Act 511 Real Estate Transfer Taxes					225,165.38
6411 Delinquent Real Estate Taxes					722,042.99
6420 Delinquent Per Capita Taxes, Section 679					769.48
6440 Delinquent Local Enabling Taxes - Flat Rate Assessments					2,308.41
6500 Earnings on Investments					272,988.73
6700 Revenues from LEA Activities					63,855.63
6832 Federal IDEA Revenue Received as Pass Through					638,275.10
6910 Rentals					2,819.36
6920 Contributions and Donations from Private Sources					287,566.59
6941 Regular Day School Tuition					10,422.50
6942 Summer School Tuition					(175.00)
6944 Receipts from Other LEAs in Pennsylvania - Education					43,964.50
6991 Refunds of a Prior Year Expenditure					8,260.78
6992 Energy Efficiency Revenues and Incentives					753.17
6999 Other Revenues Not Specified Above					53,972.76
6000 Total Revenue from Local Sources					\$19,428,513.97
7000 Revenue from State Sources					
7111 Basic Education Funding-Formula					15,022,542.30
7112 Basic Education Funding-Social Security					911,867.61
7160 Tuition for Orphans Subsidy					13,197.40
7220 Vocational Education					4,683.58
7250 Migratory Children					80.00
7271 Special Education funds for School-Aged Pupils					2,322,012.70
7311 Pupil Transportation Subsidy					819,564.96
7312 Nonpublic and Charter School Pupil Transportation Subsidy					21,175.00
7320 Rental and Sinking Fund Payments / Building Reimbursement Subsidy					343,915.71
7330 Health Services (Medical, Dental, Nurse, Act 25)					52,270.57
7340 State Property Tax Reduction Allocation					1,095,777.53
7361 School Safety and Security Grants					40,000.00

LEA : 116191103 Berwick Area SD

Printed 10/29/2020 1:37:52 PM

	<u>General Fund (10)</u>	<u>Student Sponsored Activity Fund (21)</u>	<u>Public Purpose Trust (27)</u>	<u>Other Compt Approved (28)</u>	<u>Athletic / Activity (29)</u>	<u>Capital Reserve (690.1850) (31)</u>
7000 Revenue from State Sources						
7505 Ready to Learn Block Grant	549,482.00					
7506 PAsmart Grants	(7,907.23)					
7599 Other State Revenue Not Listed Elsewhere in the 7000 Series	250.00					
7820 State Share of Retirement Contributions	4,344,678.79					
7000 Total Revenue from State Sources	\$25,533,590.92					
8000 Revenue from Federal Sources						
8514 NCLB, Title I - Improving the Academic Achievement of the Disadvantaged	844,437.38					
8515 NCLB, Title II - Preparing, Training and Recruiting High Quality Teachers and Principals	143,385.00					
8516 NCLB, Title III - Language Instruction for Limited English Proficient and Immigrant Students	10,768.00					
8517 NCLB, Title IV - 21st Century Schools	142,898.57					
8810 School-Based Access Medicaid Reimbursement Program (SBAP) Reimbursements (Access)	258,767.90					
8820 Medical Assistance Reimbursement for Administrative Claiming (Quarterly) Program	22,720.41					
8000 Total Revenue from Federal Sources	\$1,422,977.26					
Total From All Sources	\$46,385,082.15					

LEA : 116191103 Berwick Area SD

Printed 10/29/2020 1:37:52 PM

	<u>Capital Reserve</u> <u>(1431) (32)</u>	<u>Other Capital</u> <u>Projects Fund (39)</u>	<u>Debt Service (40)</u>	<u>Permanent (90)</u>	<u>Total</u>
7000 Revenue from State Sources					
7505 Ready to Learn Block Grant					549,482.00
7506 PAsmart Grants					(7,907.23)
7599 Other State Revenue Not Listed Elsewhere in the 7000 Series					250.00
7820 State Share of Retirement Contributions					4,344,678.79
7000 Total Revenue from State Sources					\$25,533,590.92
8000 Revenue from Federal Sources					
8514 NCLB, Title I - Improving the Academic Achievement of the Disadvantaged					844,437.38
8515 NCLB, Title II - Preparing, Training and Recruiting High Quality Teachers and Principals					143,385.00
8516 NCLB, Title III - Language Instruction for Limited English Proficient and Immigrant Students					10,768.00
8517 NCLB, Title IV - 21st Century Schools					142,898.57
8810 School-Based Access Medicaid Reimbursement Program (SBAP) Reimbursements (Access)					258,767.90
8820 Medical Assistance Reimbursement for Administrative Claiming (Quarterly) Program					22,720.41
8000 Total Revenue from Federal Sources					\$1,422,977.26
Total From All Sources					\$46,385,082.15

	<u>General Fund (10)</u>	<u>Student Sponsored Activity Fund (21)</u>	<u>Public Purpose Trust (27)</u>	<u>Other Compt Approved (28)</u>	<u>Athletic / Activity (29)</u>	<u>Capital Reserve (690. 1850) (31)</u>
Revenue from Local Sources	19,428,513.97					
Revenue from State Sources	25,533,590.92					
Revenue from Federal Sources	1,422,977.26					
Total From All Sources	\$46,385,082.15					

	<u>Capital Reserve (1431)</u> <u>(32)</u>	<u>Other Capital Projects</u> <u>Fund (39)</u>	<u>Debt Service (40)</u>	<u>Permanent (90)</u>	<u>Total</u>
Revenue from Local Sources					19,428,513.97
Revenue from State Sources					25,533,590.92
Revenue from Federal Sources					1,422,977.26
Total From All Sources					\$46,385,082.15

LEA : 116191103 Berwick Area SD

Printed 10/29/2020 1:38:23 PM

General Fund (10)

	<u>Total</u>
1000 Instruction	
100 Personnel Services – Salaries	
100 Personnel Services – Salaries	15,200,822.38
Total Personnel Services – Salaries	\$15,200,822.38
200 Personnel Services – Employee Benefits	
210 Group Insurance – Contracted Provider	3,884,938.94
220 Social Security Contributions	1,138,211.41
230 PSERS Retirement Contributions	4,938,178.20
250 Unemployment Compensation	21,090.84
260 Workers’ Compensation	99,437.65
280 Other Post-Employment Benefits (OPEB)	1,446,139.00
299 All Other Employee Benefits	2,592.00
Total Personnel Services – Employee Benefits	\$11,530,588.04
300 Purchased Professional and Technical Services	
322 Professional Educational Services – Ius	246,438.72
330 Other Professional Services	8,263.17
340 Technical Services	56,820.03
390 Other Purchased Professional and Technical Services	70,961.10
Total Purchased Professional and Technical Services	\$382,483.02
400 Purchased Property Services	
430 Repairs and Maintenance Services	369.50
Total Purchased Property Services	\$369.50
500 Other Purchased Services	
510 Student Transportation Services	38,004.96
530 Communications	977.91
550 Printing and Binding	2,621.79
561 Tuition To Other School Districts Within the State	204,132.62
562 Tuition To Pennsylvania Charter Schools	916,223.82
564 Tuition To Career and Technology Centers	1,855,950.00
566 Tuition To Institutions of Higher Education and Technical Institutes	10,726.83
567 Tuition To Approved Private Schools (APS) and PA Chartered Schools for the Deaf and Blind	412,995.40
568 Tuition To Private Residential Rehabilitative Institutions (PRRI) [In-State] and Detention Centers	206,517.75
580 Travel	2,898.25
594 IU Payment By Withholding for Institutionalized Children’s Programs – Special Classes	393.97
599 Other Miscellaneous Purchased Services	1,500.00
Total Other Purchased Services	\$3,652,943.30
600 Supplies	
610 General Supplies	180,109.62
640 Books and Periodicals	88,262.30
650 Supplies & Fees – Technology Related	5,984.00
Total Supplies	\$274,355.92
800 Other Objects	
810 Dues and Fees	2,664.95

LEA : 116191103 Berwick Area SD

Printed 10/29/2020 1:38:23 PM

General Fund (10)

1000 Instruction	<u>Total</u>
Total Other Objects	\$2,664.95
Total 1000 Instruction	\$31,044,227.11

General Fund (10)

1100 Regular Programs – Elementary / Secondary

	<u>Elementary</u>	<u>Secondary</u>	<u>Federal</u>	<u>Total</u>
100 Personnel Services – Salaries				
100 Personnel Services – Salaries	4,277,986.22	6,258,839.55	554,986.50	11,091,812.27
Total Personnel Services – Salaries	\$4,277,986.22	\$6,258,839.55	\$554,986.50	\$11,091,812.27
200 Personnel Services – Employee Benefits				
210 Group Insurance – Contracted Provider	1,157,123.98	1,405,332.75	173,269.72	2,735,726.45
220 Social Security Contributions	318,969.00	469,029.76	41,809.90	829,808.66
230 PSERS Retirement Contributions	1,456,592.39	1,889,067.30	191,697.60	3,537,357.29
250 Unemployment Compensation	5,010.00	6,800.09	814.02	12,624.11
260 Workers' Compensation	26,094.29	37,366.27	4,320.71	67,781.27
280 Other Post-Employment Benefits (OPEB)	475,082.50	475,082.50		950,165.00
299 All Other Employee Benefits	23.00	69.00		92.00
Total Personnel Services – Employee Benefits	\$3,438,895.16	\$4,282,747.67	\$411,911.95	\$8,133,554.78
300 Purchased Professional and Technical Services				
322 Professional Educational Services – Ius	14,616.00	17,100.00		31,716.00
340 Technical Services	16,744.79	24,785.31		41,530.10
390 Other Purchased Professional and Technical Services	16,470.06	35,230.22		51,700.28
Total Purchased Professional and Technical Services	\$47,830.85	\$77,115.53		\$124,946.38
500 Other Purchased Services				
510 Student Transportation Services	400.00	1,523.61		1,923.61
530 Communications		162.81		162.81
550 Printing and Binding		2,621.79		2,621.79
561 Tuition To Other School Districts Within the State		189,829.53		189,829.53
562 Tuition To Pennsylvania Charter Schools	245,152.85	336,149.06		581,301.91
568 Tuition To Private Residential Rehabilitative Institutions (PRRI) [In-State] and Detention Centers	1,262.00	56,444.35		57,706.35
580 Travel		287.30	970.68	1,257.98
599 Other Miscellaneous Purchased Services	500.00	1,000.00		1,500.00
Total Other Purchased Services	\$247,314.85	\$588,018.45	\$970.68	\$836,303.98
600 Supplies				
610 General Supplies	40,564.28	71,982.01	506.35	113,052.64
640 Books and Periodicals	64,464.16	7,335.30	16,462.84	88,262.30
Total Supplies	\$105,028.44	\$79,317.31	\$16,969.19	\$201,314.94
800 Other Objects				
810 Dues and Fees		1,899.95		1,899.95
Total Other Objects		\$1,899.95		\$1,899.95
Total 1100 Regular Programs – Elementary / Secondary	\$8,117,055.52	\$11,287,938.46	\$984,838.32	\$20,389,832.30

General Fund (10)

1110 Regular Programs

	<u>Elementary</u>	<u>Secondary</u>	<u>Federal</u>	<u>Total</u>
100 Personnel Services – Salaries				
100 Personnel Services – Salaries	4,277,986.22	6,258,839.55	82,597.26	10,619,423.03
Total Personnel Services – Salaries	\$4,277,986.22	\$6,258,839.55	\$82,597.26	\$10,619,423.03
200 Personnel Services – Employee Benefits				
210 Group Insurance – Contracted Provider	1,157,123.98	1,405,332.75	29,644.76	2,592,101.49
220 Social Security Contributions	318,969.00	469,029.76	6,661.60	794,660.36
230 PSERS Retirement Contributions	1,456,592.39	1,889,067.30	30,429.78	3,376,089.47
250 Unemployment Compensation	5,010.00	6,800.09	135.25	11,945.34
260 Workers' Compensation	26,094.29	37,366.27	683.37	64,143.93
280 Other Post-Employment Benefits (OPEB)	475,082.50	475,082.50		950,165.00
299 All Other Employee Benefits	23.00	69.00		92.00
Total Personnel Services – Employee Benefits	\$3,438,895.16	\$4,282,747.67	\$67,554.76	\$7,789,197.59
300 Purchased Professional and Technical Services				
322 Professional Educational Services – Ius	14,616.00	17,100.00		31,716.00
340 Technical Services	16,744.79	24,785.31		41,530.10
390 Other Purchased Professional and Technical Services	16,470.06	35,230.22		51,700.28
Total Purchased Professional and Technical Services	\$47,830.85	\$77,115.53		\$124,946.38
500 Other Purchased Services				
510 Student Transportation Services	400.00	1,523.61		1,923.61
530 Communications		162.81		162.81
550 Printing and Binding		2,621.79		2,621.79
561 Tuition To Other School Districts Within the State		189,829.53		189,829.53
562 Tuition To Pennsylvania Charter Schools	245,152.85	336,149.06		581,301.91
568 Tuition To Private Residential Rehabilitative Institutions (PRRI) [In-State] and Detention Centers	1,262.00	56,444.35		57,706.35
580 Travel		287.30	970.68	1,257.98
599 Other Miscellaneous Purchased Services	500.00	1,000.00		1,500.00
Total Other Purchased Services	\$247,314.85	\$588,018.45	\$970.68	\$836,303.98
600 Supplies				
610 General Supplies	40,564.28	71,982.01	506.35	113,052.64
640 Books and Periodicals	64,464.16	7,335.30	2,523.95	74,323.41
Total Supplies	\$105,028.44	\$79,317.31	\$3,030.30	\$187,376.05
800 Other Objects				
810 Dues and Fees		1,899.95		1,899.95
Total Other Objects		\$1,899.95		\$1,899.95
Total 1110 Regular Programs	\$8,117,055.52	\$11,287,938.46	\$154,153.00	\$19,559,146.98

LEA : 116191103 Berwick Area SD

Printed 10/29/2020 1:38:23 PM

General Fund (10)

1190 Federally-Funded Regular Programs

100 Personnel Services – Salaries

100 Personnel Services – Salaries

Total Personnel Services – Salaries

200 Personnel Services – Employee Benefits

210 Group Insurance – Contracted Provider

220 Social Security Contributions

230 PSERS Retirement Contributions

250 Unemployment Compensation

260 Workers' Compensation

Total Personnel Services – Employee Benefits

600 Supplies

640 Books and Periodicals

Total Supplies

Total 1190 Federally-Funded Regular Programs

	<u>Elementary</u>	<u>Secondary</u>	<u>Federal</u>	<u>Total</u>
			472,389.24	472,389.24
			\$472,389.24	\$472,389.24
			143,624.96	143,624.96
			35,148.30	35,148.30
			161,267.82	161,267.82
			678.77	678.77
			3,637.34	3,637.34
			\$344,357.19	\$344,357.19
			13,938.89	13,938.89
			\$13,938.89	\$13,938.89
			\$830,685.32	\$830,685.32

General Fund (10)

1200 Special Programs – Elementary / Secondary

	<u>Elementary</u>	<u>Secondary</u>	<u>Federal</u>	<u>Total</u>
100 Personnel Services – Salaries				
100 Personnel Services – Salaries	1,121,011.88	2,062,301.93	451,440.45	3,634,754.26
Total Personnel Services – Salaries	\$1,121,011.88	\$2,062,301.93	\$451,440.45	\$3,634,754.26
200 Personnel Services – Employee Benefits				
210 Group Insurance – Contracted Provider	324,658.48	646,716.69	54,133.88	1,025,509.05
220 Social Security Contributions	83,900.53	154,935.12	34,145.94	272,981.59
230 PSERS Retirement Contributions	418,530.27	744,365.22	76,288.86	1,239,184.35
250 Unemployment Compensation	2,577.13	3,529.38	1,850.29	7,956.80
260 Workers' Compensation	8,630.97	15,898.10	3,475.74	28,004.81
280 Other Post-Employment Benefits (OPEB)	174,798.50	174,798.50		349,597.00
299 All Other Employee Benefits		2,500.00		2,500.00
Total Personnel Services – Employee Benefits	\$1,013,095.88	\$1,742,743.01	\$169,894.71	\$2,925,733.60
300 Purchased Professional and Technical Services				
322 Professional Educational Services – Ius	21,728.37	142,329.52	50,664.83	214,722.72
330 Other Professional Services		4,750.00	3,513.17	8,263.17
340 Technical Services	5,081.65	9,369.57	838.71	15,289.93
390 Other Purchased Professional and Technical Services	387.81	817.65	70.39	1,275.85
Total Purchased Professional and Technical Services	\$27,197.83	\$157,266.74	\$55,087.10	\$239,551.67
400 Purchased Property Services				
430 Repairs and Maintenance Services			369.50	369.50
Total Purchased Property Services			\$369.50	\$369.50
500 Other Purchased Services				
510 Student Transportation Services			7,078.72	7,078.72
530 Communications			815.10	815.10
561 Tuition To Other School Districts Within the State		3,802.06		3,802.06
562 Tuition To Pennsylvania Charter Schools	133,273.60	201,648.31		334,921.91
567 Tuition To Approved Private Schools (APS) and PA Chartered Schools for the Deaf and Blind	43,339.61	274,570.20	95,085.59	412,995.40
568 Tuition To Private Residential Rehabilitative Institutions (PRRI) [In-State] and Detention Centers	20,031.74	128,779.66		148,811.40
580 Travel	126.03		1,204.45	1,330.48
594 IU Payment By Withholding for Institutionalized Children's Programs – Special Classes	196.99	196.98		393.97
Total Other Purchased Services	\$196,967.97	\$608,997.21	\$104,183.86	\$910,149.04
600 Supplies				
610 General Supplies	1,207.02	1,514.76	52,276.04	54,997.82
Total Supplies	\$1,207.02	\$1,514.76	\$52,276.04	\$54,997.82
800 Other Objects				
810 Dues and Fees	297.50	297.50	170.00	765.00
Total Other Objects	\$297.50	\$297.50	\$170.00	\$765.00
Total 1200 Special Programs – Elementary / Secondary	\$2,359,778.08	\$4,573,121.15	\$833,421.66	\$7,766,320.89

General Fund (10)

1210 Life Skills Support

	<u>Elementary</u>	<u>Secondary</u>	<u>Federal</u>	<u>Total</u>
100 Personnel Services – Salaries				
100 Personnel Services – Salaries	114,497.91	242,597.08	28,564.76	385,659.75
Total Personnel Services – Salaries	\$114,497.91	\$242,597.08	\$28,564.76	\$385,659.75
200 Personnel Services – Employee Benefits				
210 Group Insurance – Contracted Provider	27,015.12	92,990.34		120,005.46
220 Social Security Contributions	8,591.87	18,202.40	2,184.79	28,979.06
230 PSERS Retirement Contributions	41,771.57	85,238.56	4,814.05	131,824.18
250 Unemployment Compensation	201.49	382.62	116.12	700.23
260 Workers' Compensation	881.56	1,867.79	219.97	2,969.32
280 Other Post-Employment Benefits (OPEB)	2,304.00	2,304.00		4,608.00
Total Personnel Services – Employee Benefits	\$80,765.61	\$200,985.71	\$7,334.93	\$289,086.25
500 Other Purchased Services				
568 Tuition To Private Residential Rehabilitative Institutions (PRRI) [In-State] and Detention Centers		603.00		603.00
580 Travel			13.80	13.80
Total Other Purchased Services		\$603.00	\$13.80	\$616.80
600 Supplies				
610 General Supplies			3,087.28	3,087.28
Total Supplies			\$3,087.28	\$3,087.28
Total 1210 Life Skills Support	\$195,263.52	\$444,185.79	\$39,000.77	\$678,450.08

General Fund (10)

	<u>Elementary</u>	<u>Secondary</u>	<u>Federal</u>	<u>Total</u>
1220 Sensory Support				
100 Personnel Services – Salaries				
100 Personnel Services – Salaries	130,929.83	42,091.51	1,375.00	174,396.34
Total Personnel Services – Salaries	\$130,929.83	\$42,091.51	\$1,375.00	\$174,396.34
200 Personnel Services – Employee Benefits				
210 Group Insurance – Contracted Provider	39,217.31	13,342.19		52,559.50
220 Social Security Contributions	9,879.79	3,163.85	104.61	13,148.25
230 PSERS Retirement Contributions	44,860.11	14,397.48	471.49	59,729.08
250 Unemployment Compensation	131.08	65.52		196.60
260 Workers' Compensation	1,008.06	324.03	10.59	1,342.68
280 Other Post-Employment Benefits (OPEB)	7,524.00	7,524.00		15,048.00
Total Personnel Services – Employee Benefits	\$102,620.35	\$38,817.07	\$586.69	\$142,024.11
300 Purchased Professional and Technical Services				
322 Professional Educational Services – Ius	7,333.92	7,333.92	38,822.26	53,490.10
Total Purchased Professional and Technical Services	\$7,333.92	\$7,333.92	\$38,822.26	\$53,490.10
500 Other Purchased Services				
562 Tuition To Pennsylvania Charter Schools	25,992.81			25,992.81
568 Tuition To Private Residential Rehabilitative Institutions (PRRI) [In-State] and Detention Centers		550.00		550.00
580 Travel			172.58	172.58
Total Other Purchased Services	\$25,992.81	\$550.00	\$172.58	\$26,715.39
600 Supplies				
610 General Supplies			1,281.56	1,281.56
Total Supplies			\$1,281.56	\$1,281.56
Total 1220 Sensory Support	\$266,876.91	\$88,792.50	\$42,238.09	\$397,907.50

General Fund (10)

1230 Emotional Support

	<u>Elementary</u>	<u>Secondary</u>	<u>Federal</u>	<u>Total</u>
100 Personnel Services – Salaries				
100 Personnel Services – Salaries	254,182.93	248,760.36	14,716.45	517,659.74
Total Personnel Services – Salaries	\$254,182.93	\$248,760.36	\$14,716.45	\$517,659.74
200 Personnel Services – Employee Benefits				
210 Group Insurance – Contracted Provider	97,992.28	76,487.14		174,479.42
220 Social Security Contributions	19,061.05	18,606.99	1,125.81	38,793.85
230 PSERS Retirement Contributions	86,160.95	87,043.78	2,444.91	175,649.64
250 Unemployment Compensation	777.94	519.11	67.72	1,364.77
260 Workers' Compensation	1,957.02	1,915.36	113.27	3,985.65
280 Other Post-Employment Benefits (OPEB)	9,114.00	9,114.00		18,228.00
Total Personnel Services – Employee Benefits	\$215,063.24	\$193,686.38	\$3,751.71	\$412,501.33
300 Purchased Professional and Technical Services				
322 Professional Educational Services – Ius	2,389.15	45,478.82	11,546.14	59,414.11
Total Purchased Professional and Technical Services	\$2,389.15	\$45,478.82	\$11,546.14	\$59,414.11
500 Other Purchased Services				
510 Student Transportation Services			6,925.60	6,925.60
561 Tuition To Other School Districts Within the State		3,802.06		3,802.06
562 Tuition To Pennsylvania Charter Schools		10,132.73		10,132.73
567 Tuition To Approved Private Schools (APS) and PA Chartered Schools for the Deaf and Blind	41,384.41	219,695.00	95,085.59	356,165.00
568 Tuition To Private Residential Rehabilitative Institutions (PRRI) [In-State] and Detention Centers	16,461.74	109,069.72		125,531.46
Total Other Purchased Services	\$57,846.15	\$342,699.51	\$102,011.19	\$502,556.85
600 Supplies				
610 General Supplies			3,371.37	3,371.37
Total Supplies			\$3,371.37	\$3,371.37
Total 1230 Emotional Support	\$529,481.47	\$830,625.07	\$135,396.86	\$1,495,503.40

General Fund (10)

1240 Academic Support

	<u>Elementary</u>	<u>Secondary</u>	<u>Federal</u>	<u>Total</u>
100 Personnel Services – Salaries				
100 Personnel Services – Salaries	451,235.10	1,414,805.36	262,734.25	2,128,774.71
Total Personnel Services – Salaries	\$451,235.10	\$1,414,805.36	\$262,734.25	\$2,128,774.71
200 Personnel Services – Employee Benefits				
210 Group Insurance – Contracted Provider	98,425.57	450,939.06		549,364.63
220 Social Security Contributions	34,117.76	106,280.27	20,073.81	160,471.84
230 PSERS Retirement Contributions	174,617.30	507,756.18	44,874.40	727,247.88
250 Unemployment Compensation	1,184.64	2,413.83	1,285.89	4,884.36
260 Workers' Compensation	3,473.96	10,912.75	2,022.89	16,409.60
280 Other Post-Employment Benefits (OPEB)	138,536.00	138,536.00		277,072.00
299 All Other Employee Benefits		2,500.00		2,500.00
Total Personnel Services – Employee Benefits	\$450,355.23	\$1,219,338.09	\$68,256.99	\$1,737,950.31
300 Purchased Professional and Technical Services				
322 Professional Educational Services – Ius	24,517.36	48,690.79		73,208.15
330 Other Professional Services		4,750.00		4,750.00
390 Other Purchased Professional and Technical Services		591.00		591.00
Total Purchased Professional and Technical Services	\$24,517.36	\$54,031.79		\$78,549.15
400 Purchased Property Services				
430 Repairs and Maintenance Services			369.50	369.50
Total Purchased Property Services			\$369.50	\$369.50
500 Other Purchased Services				
562 Tuition To Pennsylvania Charter Schools	49,167.08	135,256.96		184,424.04
567 Tuition To Approved Private Schools (APS) and PA Chartered Schools for the Deaf and Blind		52,920.00		52,920.00
568 Tuition To Private Residential Rehabilitative Institutions (PRRI) [In-State] and Detention Centers	3,570.00	15,550.94		19,120.94
580 Travel	126.03		13.80	139.83
Total Other Purchased Services	\$52,863.11	\$203,727.90	\$13.80	\$256,604.81
600 Supplies				
610 General Supplies	214.22	521.96	6,460.79	7,196.97
Total Supplies	\$214.22	\$521.96	\$6,460.79	\$7,196.97
Total 1240 Academic Support	\$979,185.02	\$2,892,425.10	\$337,835.33	\$4,209,445.45

General Fund (10)

	<u>Elementary</u>	<u>Secondary</u>	<u>Federal</u>	<u>Total</u>
1241 Learning Support – Public				
100 Personnel Services – Salaries				
100 Personnel Services – Salaries	423,919.22	1,329,445.08	262,734.25	2,016,098.55
Total Personnel Services – Salaries	\$423,919.22	\$1,329,445.08	\$262,734.25	\$2,016,098.55
200 Personnel Services – Employee Benefits				
210 Group Insurance – Contracted Provider	86,454.40	416,035.74		502,490.14
220 Social Security Contributions	32,061.50	99,848.02	20,073.81	151,983.33
230 PSERS Retirement Contributions	165,250.64	478,486.01	44,874.40	688,611.05
250 Unemployment Compensation	1,152.46	2,328.14	1,285.89	4,766.49
260 Workers' Compensation	3,263.84	10,255.40	2,022.89	15,542.13
280 Other Post-Employment Benefits (OPEB)	134,956.00	134,956.00		269,912.00
299 All Other Employee Benefits		2,500.00		2,500.00
Total Personnel Services – Employee Benefits	\$423,138.84	\$1,144,409.31	\$68,256.99	\$1,635,805.14
300 Purchased Professional and Technical Services				
322 Professional Educational Services – Ius	24,517.36	48,690.79		73,208.15
330 Other Professional Services		4,750.00		4,750.00
Total Purchased Professional and Technical Services	\$24,517.36	\$53,440.79		\$77,958.15
400 Purchased Property Services				
430 Repairs and Maintenance Services			369.50	369.50
Total Purchased Property Services			\$369.50	\$369.50
500 Other Purchased Services				
562 Tuition To Pennsylvania Charter Schools	49,167.08	135,256.96		184,424.04
567 Tuition To Approved Private Schools (APS) and PA Chartered Schools for the Deaf and Blind		52,920.00		52,920.00
568 Tuition To Private Residential Rehabilitative Institutions (PRRI) [In-State] and Detention Centers	2,977.50	470.00		3,447.50
580 Travel			13.80	13.80
Total Other Purchased Services	\$52,144.58	\$188,646.96	\$13.80	\$240,805.34
600 Supplies				
610 General Supplies			6,460.79	6,460.79
Total Supplies			\$6,460.79	\$6,460.79
Total 1241 Learning Support – Public	\$923,720.00	\$2,715,942.14	\$337,835.33	\$3,977,497.47

General Fund (10)

1242 Learning Support – PRRI

500 Other Purchased Services

568 Tuition To Private Residential Rehabilitative Institutions (PRRI) [In-State] and Detention Centers

Total Other Purchased Services

Total 1242 Learning Support – PRRI

	<u>Elementary</u>	<u>Secondary</u>	<u>Federal</u>	<u>Total</u>
	592.50	15,080.94		15,673.44
	\$592.50	\$15,080.94		\$15,673.44
	\$592.50	\$15,080.94		\$15,673.44

General Fund (10)

1243 Gifted Support

	<u>Elementary</u>	<u>Secondary</u>	<u>Federal</u>	<u>Total</u>
100 Personnel Services – Salaries				
100 Personnel Services – Salaries	27,315.88	85,360.28		112,676.16
Total Personnel Services – Salaries	\$27,315.88	\$85,360.28		\$112,676.16
200 Personnel Services – Employee Benefits				
210 Group Insurance – Contracted Provider	11,971.17	34,903.32		46,874.49
220 Social Security Contributions	2,056.26	6,432.25		8,488.51
230 PSERS Retirement Contributions	9,366.66	29,270.17		38,636.83
250 Unemployment Compensation	32.18	85.69		117.87
260 Workers' Compensation	210.12	657.35		867.47
280 Other Post-Employment Benefits (OPEB)	3,580.00	3,580.00		7,160.00
Total Personnel Services – Employee Benefits	\$27,216.39	\$74,928.78		\$102,145.17
300 Purchased Professional and Technical Services				
390 Other Purchased Professional and Technical Services		591.00		591.00
Total Purchased Professional and Technical Services		\$591.00		\$591.00
500 Other Purchased Services				
580 Travel	126.03			126.03
Total Other Purchased Services	\$126.03			\$126.03
600 Supplies				
610 General Supplies	214.22	521.96		736.18
Total Supplies	\$214.22	\$521.96		\$736.18
Total 1243 Gifted Support	\$54,872.52	\$161,402.02		\$216,274.54

General Fund (10)

1260 Physical Support

	<u>Elementary</u>	<u>Secondary</u>	<u>Federal</u>	<u>Total</u>
100 Personnel Services – Salaries				
100 Personnel Services – Salaries	106,019.62	106,019.62		212,039.24
Total Personnel Services – Salaries	\$106,019.62	\$106,019.62		\$212,039.24
200 Personnel Services – Employee Benefits				
210 Group Insurance – Contracted Provider	12,957.96	12,957.96		25,915.92
220 Social Security Contributions	8,070.31	8,070.31		16,140.62
230 PSERS Retirement Contributions	35,469.84	35,469.83		70,939.67
250 Unemployment Compensation	143.19	143.18		286.37
260 Workers' Compensation	816.38	816.37		1,632.75
280 Other Post-Employment Benefits (OPEB)	9,114.00	9,114.00		18,228.00
Total Personnel Services – Employee Benefits	\$66,571.68	\$66,571.65		\$133,143.33
500 Other Purchased Services				
562 Tuition To Pennsylvania Charter Schools	9,900.99	8,045.91		17,946.90
568 Tuition To Private Residential Rehabilitative Institutions (PRRI) [In-State] and Detention Centers		3,006.00		3,006.00
580 Travel			287.63	287.63
Total Other Purchased Services	\$9,900.99	\$11,051.91	\$287.63	\$21,240.53
600 Supplies				
610 General Supplies			2,409.90	2,409.90
Total Supplies			\$2,409.90	\$2,409.90
Total 1260 Physical Support	\$182,492.29	\$183,643.18	\$2,697.53	\$368,833.00

General Fund (10)

1270 Multi-Handicapped Support

	<u>Elementary</u>	<u>Secondary</u>	<u>Federal</u>	<u>Total</u>
100 Personnel Services – Salaries				
100 Personnel Services – Salaries	62,346.49	3,328.00	11,363.06	77,037.55
Total Personnel Services – Salaries	\$62,346.49	\$3,328.00	\$11,363.06	\$77,037.55
200 Personnel Services – Employee Benefits				
210 Group Insurance – Contracted Provider	49,050.24			49,050.24
220 Social Security Contributions	4,042.05	251.75	869.25	5,163.05
230 PSERS Retirement Contributions	23,326.68	1,141.16	1,948.19	26,416.03
250 Unemployment Compensation	138.79	5.12	68.89	212.80
260 Workers' Compensation	480.13	25.61	87.49	593.23
Total Personnel Services – Employee Benefits	\$77,037.89	\$1,423.64	\$2,973.82	\$81,435.35
300 Purchased Professional and Technical Services				
322 Professional Educational Services – lus	(12,891.15)	40,446.91		27,555.76
Total Purchased Professional and Technical Services	(\$12,891.15)	\$40,446.91		\$27,555.76
500 Other Purchased Services				
510 Student Transportation Services			153.12	153.12
580 Travel			306.24	306.24
Total Other Purchased Services			\$459.36	\$459.36
600 Supplies				
610 General Supplies			4,235.96	4,235.96
Total Supplies			\$4,235.96	\$4,235.96
Total 1270 Multi-Handicapped Support	\$126,493.23	\$45,198.55	\$19,032.20	\$190,723.98

General Fund (10)

1290 Special Programs - Other Support

	<u>Elementary</u>	<u>Secondary</u>	<u>Federal</u>	<u>Total</u>
100 Personnel Services – Salaries				
100 Personnel Services – Salaries	1,800.00	4,700.00	132,686.93	139,186.93
Total Personnel Services – Salaries	\$1,800.00	\$4,700.00	\$132,686.93	\$139,186.93
200 Personnel Services – Employee Benefits				
210 Group Insurance – Contracted Provider			54,133.88	54,133.88
220 Social Security Contributions	137.70	359.55	9,787.67	10,284.92
230 PSERS Retirement Contributions	12,323.82	13,318.23	21,735.82	47,377.87
250 Unemployment Compensation			311.67	311.67
260 Workers' Compensation	13.86	36.19	1,021.53	1,071.58
280 Other Post-Employment Benefits (OPEB)	8,206.50	8,206.50		16,413.00
Total Personnel Services – Employee Benefits	\$20,681.88	\$21,920.47	\$86,990.57	\$129,592.92
300 Purchased Professional and Technical Services				
322 Professional Educational Services – Ius	379.09	379.08	296.43	1,054.60
330 Other Professional Services			3,513.17	3,513.17
340 Technical Services	5,081.65	9,369.57	838.71	15,289.93
390 Other Purchased Professional and Technical Services	387.81	226.65	70.39	684.85
Total Purchased Professional and Technical Services	\$5,848.55	\$9,975.30	\$4,718.70	\$20,542.55
500 Other Purchased Services				
530 Communications			815.10	815.10
562 Tuition To Pennsylvania Charter Schools	48,212.72	48,212.71		96,425.43
567 Tuition To Approved Private Schools (APS) and PA Chartered Schools for the Deaf and Blind	1,955.20	1,955.20		3,910.40
580 Travel			410.40	410.40
594 IU Payment By Withholding for Institutionalized Children's Programs – Special Classes	196.99	196.98		393.97
Total Other Purchased Services	\$50,364.91	\$50,364.89	\$1,225.50	\$101,955.30
600 Supplies				
610 General Supplies	992.80	992.80	31,429.18	33,414.78
Total Supplies	\$992.80	\$992.80	\$31,429.18	\$33,414.78
800 Other Objects				
810 Dues and Fees	297.50	297.50	170.00	765.00
Total Other Objects	\$297.50	\$297.50	\$170.00	\$765.00
Total 1290 Special Programs - Other Support	\$79,985.64	\$88,250.96	\$257,220.88	\$425,457.48

General Fund (10)

1300 Vocational Education

100 Personnel Services – Salaries

	<u>Elementary</u>	<u>Secondary</u>	<u>Federal</u>	<u>Total</u>
100 Personnel Services – Salaries		435,359.85		435,359.85
Total Personnel Services – Salaries		\$435,359.85		\$435,359.85

200 Personnel Services – Employee Benefits

210 Group Insurance – Contracted Provider		123,703.44		123,703.44
220 Social Security Contributions		32,503.13		32,503.13
230 PSERS Retirement Contributions		148,445.06		148,445.06
250 Unemployment Compensation		428.61		428.61
260 Workers' Compensation		3,352.07		3,352.07
280 Other Post-Employment Benefits (OPEB)		138,049.00		138,049.00
Total Personnel Services – Employee Benefits		\$446,481.31		\$446,481.31

500 Other Purchased Services

510 Student Transportation Services		(3,972.12)		(3,972.12)
564 Tuition To Career and Technology Centers		1,855,950.00		1,855,950.00
580 Travel		(1,507.49)		(1,507.49)
Total Other Purchased Services		\$1,850,470.39		\$1,850,470.39

600 Supplies

610 General Supplies		9,771.82		9,771.82
650 Supplies & Fees – Technology Related		5,984.00		5,984.00
Total Supplies		\$15,755.82		\$15,755.82

Total 1300 Vocational Education

		\$2,748,067.37		\$2,748,067.37
--	--	-----------------------	--	-----------------------

General Fund (10)

	<u>Elementary</u>	<u>Secondary</u>	<u>Federal</u>	<u>Total</u>
1400 Other Instructional Programs – Elementary / Secondary				
100 Personnel Services – Salaries				
100 Personnel Services – Salaries	1,358.50	1,358.50	36,179.00	38,896.00
Total Personnel Services – Salaries	\$1,358.50	\$1,358.50	\$36,179.00	\$38,896.00
200 Personnel Services – Employee Benefits				
220 Social Security Contributions	101.12	101.12	2,715.79	2,918.03
230 PSERS Retirement Contributions	465.84	465.83	12,259.83	13,191.50
250 Unemployment Compensation	4.10	4.10	73.12	81.32
260 Workers' Compensation	10.46	10.45	278.59	299.50
280 Other Post-Employment Benefits (OPEB)	4,164.00	4,164.00		8,328.00
Total Personnel Services – Employee Benefits	\$4,745.52	\$4,745.50	\$15,327.33	\$24,818.35
300 Purchased Professional and Technical Services				
390 Other Purchased Professional and Technical Services			5,859.97	5,859.97
Total Purchased Professional and Technical Services			\$5,859.97	\$5,859.97
500 Other Purchased Services				
510 Student Transportation Services			13,371.25	13,371.25
561 Tuition To Other School Districts Within the State	5,250.52	5,250.51		10,501.03
580 Travel	110.30	110.30	1,596.68	1,817.28
Total Other Purchased Services	\$5,360.82	\$5,360.81	\$14,967.93	\$25,689.56
600 Supplies				
610 General Supplies		2,207.48	79.86	2,287.34
Total Supplies		\$2,207.48	\$79.86	\$2,287.34
Total 1400 Other Instructional Programs – Elementary / Secondary	\$11,464.84	\$13,672.29	\$72,414.09	\$97,551.22

General Fund (10)

	<u>Elementary</u>	<u>Secondary</u>	<u>Federal</u>	<u>Total</u>
1430 Homebound Instruction				
100 Personnel Services – Salaries				
100 Personnel Services – Salaries	1,358.50	1,358.50		2,717.00
Total Personnel Services – Salaries	\$1,358.50	\$1,358.50		\$2,717.00
200 Personnel Services – Employee Benefits				
220 Social Security Contributions	101.12	101.12		202.24
230 PSERS Retirement Contributions	465.84	465.83		931.67
250 Unemployment Compensation	4.10	4.10		8.20
260 Workers' Compensation	10.46	10.45		20.91
Total Personnel Services – Employee Benefits	\$581.52	\$581.50		\$1,163.02
500 Other Purchased Services				
580 Travel	110.30	110.30		220.60
Total Other Purchased Services	\$110.30	\$110.30		\$220.60
Total 1430 Homebound Instruction	\$2,050.32	\$2,050.30		\$4,100.62

General Fund (10)

	<u>Elementary</u>	<u>Secondary</u>	<u>Federal</u>	<u>Total</u>
1440 Alternative Regular Education Programs				
500 Other Purchased Services				
561 Tuition To Other School Districts Within the State	5,250.52	5,250.51		10,501.03
Total Other Purchased Services	\$5,250.52	\$5,250.51		\$10,501.03
Total 1440 Alternative Regular Education Programs	\$5,250.52	\$5,250.51		\$10,501.03

LEA : 116191103 Berwick Area SD

Printed 10/29/2020 1:38:23 PM

General Fund (10)

1441 Adjudicated / Court-Placed Programs

500 Other Purchased Services

561 Tuition To Other School Districts Within the State

Total Other Purchased Services

Total 1441 Adjudicated / Court-Placed Programs

	<u>Elementary</u>	<u>Secondary</u>	<u>Federal</u>	<u>Total</u>
561 Tuition To Other School Districts Within the State	5,250.52	5,250.51		10,501.03
Total Other Purchased Services	\$5,250.52	\$5,250.51		\$10,501.03
Total 1441 Adjudicated / Court-Placed Programs	\$5,250.52	\$5,250.51		\$10,501.03

General Fund (10)

1450 Instructional Programs Outside the Established School Day

	<u>Elementary</u>	<u>Secondary</u>	<u>Federal</u>	<u>Total</u>
100 Personnel Services – Salaries				
100 Personnel Services – Salaries			36,179.00	36,179.00
Total Personnel Services – Salaries			\$36,179.00	\$36,179.00
200 Personnel Services – Employee Benefits				
220 Social Security Contributions			2,715.79	2,715.79
230 PSERS Retirement Contributions			12,259.83	12,259.83
250 Unemployment Compensation			73.12	73.12
260 Workers' Compensation			278.59	278.59
280 Other Post-Employment Benefits (OPEB)	4,164.00	4,164.00		8,328.00
Total Personnel Services – Employee Benefits	\$4,164.00	\$4,164.00	\$15,327.33	\$23,655.33
300 Purchased Professional and Technical Services				
390 Other Purchased Professional and Technical Services			5,859.97	5,859.97
Total Purchased Professional and Technical Services			\$5,859.97	\$5,859.97
500 Other Purchased Services				
510 Student Transportation Services			13,371.25	13,371.25
580 Travel			1,596.68	1,596.68
Total Other Purchased Services			\$14,967.93	\$14,967.93
600 Supplies				
610 General Supplies		2,207.48	79.86	2,287.34
Total Supplies		\$2,207.48	\$79.86	\$2,287.34
Total 1450 Instructional Programs Outside the Established School Day	\$4,164.00	\$6,371.48	\$72,414.09	\$82,949.57

LEA : 116191103 Berwick Area SD

Printed 10/29/2020 1:38:23 PM

General Fund (10)

1500 Nonpublic School Programs

Elementary

Secondary

Federal

Total

300 Purchased Professional and Technical Services

390 Other Purchased Professional and Technical Services

12,125.00

12,125.00

Total Purchased Professional and Technical Services

\$12,125.00

\$12,125.00

Total 1500 Nonpublic School Programs

\$12,125.00

\$12,125.00

LEA : 116191103 Berwick Area SD

Printed 10/29/2020 1:38:23 PM

General Fund (10)

1700 Higher Education Programs for Secondary Students

Elementary

Secondary

Federal

Total

500 Other Purchased Services

510 Student Transportation Services

19,603.50

566 Tuition To Institutions of Higher Education and Technical Institutes

10,726.83

Total Other Purchased Services

\$30,330.33

Total 1700 Higher Education Programs for Secondary Students

\$30,330.33

General Fund (10)

2000 Support Services

Total

100 Personnel Services – Salaries

100 Personnel Services – Salaries 5,329,288.54

Total Personnel Services – Salaries

\$5,329,288.54

200 Personnel Services – Employee Benefits

210 Group Insurance – Contracted Provider 1,325,698.62

220 Social Security Contributions 396,795.69

230 PSERS Retirement Contributions 1,763,384.75

240 Tuition Reimbursement 45,262.00

250 Unemployment Compensation 7,231.70

260 Workers' Compensation 40,826.46

280 Other Post-Employment Benefits (OPEB) 300,228.00

299 All Other Employee Benefits 7,500.00

Total Personnel Services – Employee Benefits

\$3,886,927.22

300 Purchased Professional and Technical Services

322 Professional Educational Services – Ius 3,986.00

330 Other Professional Services 112,572.99

340 Technical Services 6,549.80

360 Employee Training and Development Services 40,484.39

390 Other Purchased Professional and Technical Services 327,581.29

Total Purchased Professional and Technical Services

\$491,174.47

400 Purchased Property Services

410 Cleaning Services 36,032.10

420 Utility Services 89,809.44

430 Repairs and Maintenance Services 143,053.00

440 Rentals 7,872.15

460 Extermination Services 16,282.77

490 Other Purchased Property Services 500.00

Total Purchased Property Services

\$293,549.46

500 Other Purchased Services

513 Contracted Carriers 1,869,079.53

516 Student Transportation Services From the IU 75,178.58

520 Insurance – General 4,275.09

522 Automotive Liability Insurance 22,006.00

523 General Property and Liability Insurance 194,794.00

529 Other Insurance 51,135.00

530 Communications 160,867.52

549 Other Advertising/Public Relations 22,913.00

550 Printing and Binding 10,277.81

580 Travel 7,597.89

Total Other Purchased Services

\$2,418,124.42

600 Supplies

610 General Supplies 272,906.56

620 Energy 562,661.95

640 Books and Periodicals 82,275.55

LEA : 116191103 Berwick Area SD

Printed 10/29/2020 1:38:40 PM

General Fund (10)

2000 Support Services

Total

600 Supplies

650 Supplies & Fees – Technology Related

637,041.72

Total Supplies

\$1,554,885.78

700 Property

790 Other Property

8,200.00

Total Property

\$8,200.00

800 Other Objects

810 Dues and Fees

23,197.76

820 Claims and Judgments Against the LEA

26,420.00

Total Other Objects

\$49,617.76

Total 2000 Support Services

\$14,031,767.65

General Fund (10)

	<u>Elementary</u>	<u>Secondary</u>	<u>Federal</u>	<u>Total</u>
2100 Support Services – Students				
100 Personnel Services – Salaries				
100 Personnel Services – Salaries	238,833.81	657,508.46	58,180.66	1,140,386.12
Total Personnel Services – Salaries	\$238,833.81	\$657,508.46	\$58,180.66	\$1,140,386.12
200 Personnel Services – Employee Benefits				
210 Group Insurance – Contracted Provider	73,197.18	121,149.58	24.96	281,826.40
220 Social Security Contributions	19,941.56	49,802.42	2,380.08	85,809.60
230 PSERS Retirement Contributions	81,674.97	223,433.58	18,191.69	386,975.50
250 Unemployment Compensation	263.87	561.03	22.44	1,206.02
260 Workers' Compensation	2,213.08	5,062.63	74.01	8,780.91
280 Other Post-Employment Benefits (OPEB)				11,000.00
299 All Other Employee Benefits	750.00	750.00		1,500.00
Total Personnel Services – Employee Benefits	\$178,040.66	\$400,759.24	\$20,693.18	\$777,098.43
300 Purchased Professional and Technical Services				
322 Professional Educational Services – Ius		110.00		110.00
330 Other Professional Services	1,186.25	1,186.25		29,625.50
390 Other Purchased Professional and Technical Services		225.00		225.00
Total Purchased Professional and Technical Services	\$1,186.25	\$1,521.25		\$29,960.50
500 Other Purchased Services				
530 Communications				815.10
580 Travel		114.84	406.81	559.60
Total Other Purchased Services		\$114.84	\$406.81	\$1,374.70
600 Supplies				
610 General Supplies	1,653.89	3,899.90		8,586.44
640 Books and Periodicals	238.14			238.14
Total Supplies	\$1,892.03	\$3,899.90		\$8,824.58
800 Other Objects				
810 Dues and Fees				70.00
Total Other Objects				\$70.00
Total 2100 Support Services – Students	\$419,952.75	\$1,063,803.69	\$79,280.65	\$1,957,714.33

LEA : 116191103 Berwick Area SD

Printed 10/29/2020 1:38:40 PM

General Fund (10)

2110 Supervision of Student Services

100 Personnel Services – Salaries

	<u>Elementary</u>	<u>Secondary</u>	<u>Federal</u>	<u>Total</u>
100 Personnel Services – Salaries	58,921.67	58,921.67		117,843.34
Total Personnel Services – Salaries	\$58,921.67	\$58,921.67		\$117,843.34

200 Personnel Services – Employee Benefits

210 Group Insurance – Contracted Provider	166.26	166.26		332.52
220 Social Security Contributions	4,534.94	4,534.94		9,069.88
230 PSERS Retirement Contributions	19,108.35	19,108.35		38,216.70
250 Unemployment Compensation	33.00	33.00		66.00
260 Workers' Compensation	453.69	453.69		907.38
299 All Other Employee Benefits	750.00	750.00		1,500.00
Total Personnel Services – Employee Benefits	\$25,046.24	\$25,046.24		\$50,092.48
Total 2110 Supervision of Student Services	\$83,967.91	\$83,967.91		\$167,935.82

General Fund (10)

	<u>Elementary</u>	<u>Secondary</u>	<u>Federal</u>	<u>Total</u>
2111 Supervision of Student Services – Head of Component				
100 Personnel Services – Salaries				
100 Personnel Services – Salaries	58,921.67	58,921.67		117,843.34
Total Personnel Services – Salaries	\$58,921.67	\$58,921.67		\$117,843.34
200 Personnel Services – Employee Benefits				
210 Group Insurance – Contracted Provider	166.26	166.26		332.52
220 Social Security Contributions	4,534.94	4,534.94		9,069.88
230 PSERS Retirement Contributions	19,108.35	19,108.35		38,216.70
250 Unemployment Compensation	33.00	33.00		66.00
260 Workers' Compensation	453.69	453.69		907.38
299 All Other Employee Benefits	750.00	750.00		1,500.00
Total Personnel Services – Employee Benefits	\$25,046.24	\$25,046.24		\$50,092.48
Total 2111 Supervision of Student Services – Head of Component	\$83,967.91	\$83,967.91		\$167,935.82

General Fund (10)

2120 Guidance Services

	<u>Elementary</u>	<u>Secondary</u>	<u>Federal</u>	<u>Total</u>
100 Personnel Services – Salaries				
100 Personnel Services – Salaries	134,974.25	553,648.90	48,577.00	737,200.15
Total Personnel Services – Salaries	\$134,974.25	\$553,648.90	\$48,577.00	\$737,200.15
200 Personnel Services – Employee Benefits				
210 Group Insurance – Contracted Provider	68,181.36	116,133.76		184,315.12
220 Social Security Contributions	11,983.76	41,844.63	1,645.49	55,473.88
230 PSERS Retirement Contributions	46,354.33	188,112.94	16,585.51	251,052.78
250 Unemployment Compensation	197.86	495.03		692.89
260 Workers' Compensation	1,413.35	4,262.90		5,676.25
Total Personnel Services – Employee Benefits	\$128,130.66	\$350,849.26	\$18,231.00	\$497,210.92
300 Purchased Professional and Technical Services				
390 Other Purchased Professional and Technical Services		225.00		225.00
Total Purchased Professional and Technical Services		\$225.00		\$225.00
500 Other Purchased Services				
580 Travel		114.84		114.84
Total Other Purchased Services		\$114.84		\$114.84
600 Supplies				
610 General Supplies	1,653.89	3,899.90		5,553.79
640 Books and Periodicals	238.14			238.14
Total Supplies	\$1,892.03	\$3,899.90		\$5,791.93
Total 2120 Guidance Services	\$264,996.94	\$908,737.90	\$66,808.00	\$1,240,542.84

General Fund (10)

2130 Attendance Services

Elementary

Secondary

Federal

Total

100 Personnel Services – Salaries

100 Personnel Services – Salaries

8,922.42

Total Personnel Services – Salaries

\$8,922.42

200 Personnel Services – Employee Benefits

210 Group Insurance – Contracted Provider

10.20

220 Social Security Contributions

682.50

230 PSERS Retirement Contributions

3,056.47

250 Unemployment Compensation

16.18

260 Workers' Compensation

68.64

Total Personnel Services – Employee Benefits

\$3,833.99

Total 2130 Attendance Services

\$12,756.41

General Fund (10)

2140 Psychological Services

	<u>Elementary</u>	<u>Secondary</u>	<u>Federal</u>	<u>Total</u>
100 Personnel Services – Salaries				
100 Personnel Services – Salaries	44,937.89	44,937.89	9,603.66	99,479.44
Total Personnel Services – Salaries	\$44,937.89	\$44,937.89	\$9,603.66	\$99,479.44
200 Personnel Services – Employee Benefits				
210 Group Insurance – Contracted Provider	4,849.56	4,849.56	24.96	9,724.08
220 Social Security Contributions	3,422.86	3,422.85	734.59	7,580.30
230 PSERS Retirement Contributions	16,212.29	16,212.29	1,606.18	34,030.76
250 Unemployment Compensation	33.01	33.00	22.44	88.45
260 Workers' Compensation	346.04	346.04	74.01	766.09
Total Personnel Services – Employee Benefits	\$24,863.76	\$24,863.74	\$2,462.18	\$52,189.68
300 Purchased Professional and Technical Services				
322 Professional Educational Services – lus		110.00		110.00
330 Other Professional Services	1,186.25	1,186.25		2,372.50
Total Purchased Professional and Technical Services	\$1,186.25	\$1,296.25		\$2,482.50
500 Other Purchased Services				
580 Travel			406.81	406.81
Total Other Purchased Services			\$406.81	\$406.81
Total 2140 Psychological Services	\$70,987.90	\$71,097.88	\$12,472.65	\$154,558.43

General Fund (10)

2160 Social Work Services

Elementary

Secondary

Federal

Total

100 Personnel Services – Salaries

100 Personnel Services – Salaries

11,902.50

Total Personnel Services – Salaries

\$11,902.50

200 Personnel Services – Employee Benefits

220 Social Security Contributions

910.57

230 PSERS Retirement Contributions

4,081.39

250 Unemployment Compensation

77.48

260 Workers' Compensation

91.66

Total Personnel Services – Employee Benefits

\$5,161.10

300 Purchased Professional and Technical Services

330 Other Professional Services

27,253.00

Total Purchased Professional and Technical Services

\$27,253.00

Total 2160 Social Work Services

\$44,316.60

General Fund (10)

2200 Support Services – Instructional Staff

	<u>Elementary</u>	<u>Secondary</u>	<u>Federal</u>	<u>Total</u>
100 Personnel Services – Salaries				
100 Personnel Services – Salaries	175,324.78	343,394.58	1,306.00	520,025.36
Total Personnel Services – Salaries	\$175,324.78	\$343,394.58	\$1,306.00	\$520,025.36
200 Personnel Services – Employee Benefits				
210 Group Insurance – Contracted Provider	9,876.12	37,715.16		47,591.28
220 Social Security Contributions	13,368.85	26,106.47	92.68	39,568.00
230 PSERS Retirement Contributions	57,410.52	114,484.38	223.91	172,118.81
240 Tuition Reimbursement	4,804.50	4,804.50		9,609.00
250 Unemployment Compensation	231.00	393.69		624.69
260 Workers' Compensation	1,348.32	2,642.35	10.06	4,000.73
280 Other Post-Employment Benefits (OPEB)	9,114.00	9,114.00		18,228.00
299 All Other Employee Benefits	750.00	750.00		1,500.00
Total Personnel Services – Employee Benefits	\$96,903.31	\$196,010.55	\$326.65	\$293,240.51
300 Purchased Professional and Technical Services				
322 Professional Educational Services – Ius	3,876.00			3,876.00
360 Employee Training and Development Services	5,973.00	6,272.00	4,364.00	16,609.00
390 Other Purchased Professional and Technical Services	1,021.50	1,236.50		2,258.00
Total Purchased Professional and Technical Services	\$10,870.50	\$7,508.50	\$4,364.00	\$22,743.00
500 Other Purchased Services				
530 Communications	1,513.42	1,513.40		3,026.82
550 Printing and Binding	216.45	216.45		432.90
580 Travel	1,420.11	1,374.41	710.83	3,505.35
Total Other Purchased Services	\$3,149.98	\$3,104.26	\$710.83	\$6,965.07
600 Supplies				
610 General Supplies	10,006.50	12,976.51		22,983.01
640 Books and Periodicals	42,365.73	39,348.88		81,714.61
650 Supplies & Fees – Technology Related	99,600.50	99,600.50		199,201.00
Total Supplies	\$151,972.73	\$151,925.89		\$303,898.62
800 Other Objects				
810 Dues and Fees		590.00		590.00
Total Other Objects		\$590.00		\$590.00
Total 2200 Support Services – Instructional Staff	\$438,221.30	\$702,533.78	\$6,707.48	\$1,147,462.56

General Fund (10)

2220 Technology Support Services

100 Personnel Services – Salaries

	<u>Elementary</u>	<u>Secondary</u>	<u>Federal</u>	<u>Total</u>
100 Personnel Services – Salaries	49,592.39	49,592.39		99,184.78
Total Personnel Services – Salaries	\$49,592.39	\$49,592.39		\$99,184.78

200 Personnel Services – Employee Benefits

210 Group Insurance – Contracted Provider	20.40	20.40		40.80
220 Social Security Contributions	3,793.83	3,793.83		7,587.66
230 PSERS Retirement Contributions	16,576.60	16,576.60		33,153.20
250 Unemployment Compensation	33.01	33.00		66.01
260 Workers' Compensation	381.88	381.88		763.76
Total Personnel Services – Employee Benefits	\$20,805.72	\$20,805.71		\$41,611.43

500 Other Purchased Services

530 Communications	347.76	347.75		695.51
580 Travel	52.90	52.89		105.79
Total Other Purchased Services	\$400.66	\$400.64		\$801.30
Total 2220 Technology Support Services	\$70,798.77	\$70,798.74		\$141,597.51

General Fund (10)

	<u>Elementary</u>	<u>Secondary</u>	<u>Federal</u>	<u>Total</u>
2250 School Library Services				
100 Personnel Services – Salaries				
100 Personnel Services – Salaries	57,995.40	114,905.32		172,900.72
Total Personnel Services – Salaries	\$57,995.40	\$114,905.32		\$172,900.72
200 Personnel Services – Employee Benefits				
210 Group Insurance – Contracted Provider	9,699.12	27,015.12		36,714.24
220 Social Security Contributions	4,406.42	8,624.82		13,031.24
230 PSERS Retirement Contributions	19,787.24	39,382.21		59,169.45
250 Unemployment Compensation	136.65	200.36		337.01
260 Workers' Compensation	446.59	884.72		1,331.31
280 Other Post-Employment Benefits (OPEB)	9,114.00	9,114.00		18,228.00
Total Personnel Services – Employee Benefits	\$43,590.02	\$85,221.23		\$128,811.25
600 Supplies				
610 General Supplies	430.13	669.21		1,099.34
640 Books and Periodicals	13,855.11	10,870.54		24,725.65
Total Supplies	\$14,285.24	\$11,539.75		\$25,824.99
800 Other Objects				
810 Dues and Fees		590.00		590.00
Total Other Objects		\$590.00		\$590.00
Total 2250 School Library Services	\$115,870.66	\$212,256.30		\$328,126.96

General Fund (10)

2260 Instruction and Curriculum Development Services

	<u>Elementary</u>	<u>Secondary</u>	<u>Federal</u>	<u>Total</u>
100 Personnel Services – Salaries				
100 Personnel Services – Salaries	67,513.49	178,673.37		246,186.86
Total Personnel Services – Salaries	\$67,513.49	\$178,673.37		\$246,186.86
200 Personnel Services – Employee Benefits				
210 Group Insurance – Contracted Provider	156.60	10,679.64		10,836.24
220 Social Security Contributions	5,168.60	13,687.82		18,856.42
230 PSERS Retirement Contributions	20,934.72	58,413.61		79,348.33
250 Unemployment Compensation	61.34	160.33		221.67
260 Workers' Compensation	519.85	1,375.75		1,895.60
299 All Other Employee Benefits	750.00	750.00		1,500.00
Total Personnel Services – Employee Benefits	\$27,591.11	\$85,067.15		\$112,658.26
300 Purchased Professional and Technical Services				
322 Professional Educational Services – Ius	3,876.00			3,876.00
390 Other Purchased Professional and Technical Services	1,021.50	1,236.50		2,258.00
Total Purchased Professional and Technical Services	\$4,897.50	\$1,236.50		\$6,134.00
500 Other Purchased Services				
530 Communications	1,165.66	1,165.65		2,331.31
550 Printing and Binding	216.45	216.45		432.90
Total Other Purchased Services	\$1,382.11	\$1,382.10		\$2,764.21
600 Supplies				
610 General Supplies	9,576.37	12,307.30		21,883.67
640 Books and Periodicals	28,510.62	28,478.34		56,988.96
650 Supplies & Fees – Technology Related	99,600.50	99,600.50		199,201.00
Total Supplies	\$137,687.49	\$140,386.14		\$278,073.63
Total 2260 Instruction and Curriculum Development Services	\$239,071.70	\$406,745.26		\$645,816.96

General Fund (10)

	<u>Elementary</u>	<u>Secondary</u>	<u>Federal</u>	<u>Total</u>
2270 Instructional Staff Professional Development Services				
100 Personnel Services – Salaries				
100 Personnel Services – Salaries	223.50	223.50	1,306.00	1,753.00
Total Personnel Services – Salaries	\$223.50	\$223.50	\$1,306.00	\$1,753.00
200 Personnel Services – Employee Benefits				
220 Social Security Contributions			92.68	92.68
230 PSERS Retirement Contributions	111.96	111.96	223.91	447.83
240 Tuition Reimbursement	4,804.50	4,804.50		9,609.00
260 Workers' Compensation			10.06	10.06
Total Personnel Services – Employee Benefits	\$4,916.46	\$4,916.46	\$326.65	\$10,159.57
300 Purchased Professional and Technical Services				
360 Employee Training and Development Services	5,973.00	6,272.00	4,364.00	16,609.00
Total Purchased Professional and Technical Services	\$5,973.00	\$6,272.00	\$4,364.00	\$16,609.00
500 Other Purchased Services				
580 Travel	1,367.21	1,321.52	710.83	3,399.56
Total Other Purchased Services	\$1,367.21	\$1,321.52	\$710.83	\$3,399.56
Total 2270 Instructional Staff Professional Development Services	\$12,480.17	\$12,733.48	\$6,707.48	\$31,921.13

General Fund (10)

	<u>Elementary</u>	<u>Secondary</u>	<u>Federal</u>	<u>Total</u>
2300 Support Services – Administration				
100 Personnel Services – Salaries				
100 Personnel Services – Salaries	436,882.12	499,945.77		1,247,532.94
Total Personnel Services – Salaries	\$436,882.12	\$499,945.77		\$1,247,532.94
200 Personnel Services – Employee Benefits				
210 Group Insurance – Contracted Provider	106,354.97	129,746.61		269,856.44
220 Social Security Contributions	32,690.11	37,552.88		90,896.88
230 PSERS Retirement Contributions	146,935.53	166,289.56		387,107.62
250 Unemployment Compensation	557.84	635.02		1,324.83
260 Workers' Compensation	3,363.89	3,849.62		9,387.98
280 Other Post-Employment Benefits (OPEB)				157,896.00
299 All Other Employee Benefits	1,500.00			3,000.00
Total Personnel Services – Employee Benefits	\$291,402.34	\$338,073.69		\$919,469.75
300 Purchased Professional and Technical Services				
330 Other Professional Services				29,071.20
340 Technical Services				6,549.80
390 Other Purchased Professional and Technical Services				81,239.89
Total Purchased Professional and Technical Services				\$116,860.89
500 Other Purchased Services				
520 Insurance – General				3,968.09
530 Communications	3,695.73	4,229.85		13,345.45
550 Printing and Binding	185.65	7,233.50		9,769.91
580 Travel		107.73		107.73
Total Other Purchased Services	\$3,881.38	\$11,571.08		\$27,191.18
600 Supplies				
610 General Supplies	2,233.98	3,218.22		7,046.30
640 Books and Periodicals				322.80
Total Supplies	\$2,233.98	\$3,218.22		\$7,369.10
800 Other Objects				
810 Dues and Fees	1,785.00	2,380.00		21,591.18
820 Claims and Judgments Against the LEA				26,420.00
Total Other Objects	\$1,785.00	\$2,380.00		\$48,011.18
Total 2300 Support Services – Administration	\$736,184.82	\$855,188.76		\$2,366,435.04

General Fund (10)

2310 Board Services

Elementary Secondary Federal Total

100	<u>Personnel Services – Salaries</u>				
	100 Personnel Services – Salaries				7,369.98
Total Personnel Services – Salaries					\$7,369.98
200	<u>Personnel Services – Employee Benefits</u>				
	220 Social Security Contributions				556.13
	230 PSERS Retirement Contributions				2,524.78
	250 Unemployment Compensation				8.19
	260 Workers' Compensation				56.63
Total Personnel Services – Employee Benefits					\$3,145.73
300	<u>Purchased Professional and Technical Services</u>				
	390 Other Purchased Professional and Technical Services				160.00
Total Purchased Professional and Technical Services					\$160.00
600	<u>Supplies</u>				
	610 General Supplies				376.72
Total Supplies					\$376.72
800	<u>Other Objects</u>				
	810 Dues and Fees				14,637.72
	820 Claims and Judgments Against the LEA				26,420.00
Total Other Objects					\$41,057.72
Total 2310 Board Services					\$52,110.15

General Fund (10)

	<u>Elementary</u>	<u>Secondary</u>	<u>Federal</u>	<u>Total</u>
2330 Tax Assessment and Collection Services				
100 Personnel Services – Salaries				
100 Personnel Services – Salaries				28,294.00
Total Personnel Services – Salaries				\$28,294.00
200 Personnel Services – Employee Benefits				
220 Social Security Contributions				2,164.51
Total Personnel Services – Employee Benefits				\$2,164.51
300 Purchased Professional and Technical Services				
390 Other Purchased Professional and Technical Services				50,335.01
Total Purchased Professional and Technical Services				\$50,335.01
500 Other Purchased Services				
520 Insurance – General				3,968.09
530 Communications				5,419.87
550 Printing and Binding				2,350.76
Total Other Purchased Services				\$11,738.72
600 Supplies				
610 General Supplies				114.74
Total Supplies				\$114.74
Total 2330 Tax Assessment and Collection Services				\$92,646.98

LEA : 116191103 Berwick Area SD

Printed 10/29/2020 1:38:40 PM

General Fund (10)

2350 Legal and Accounting Services

Elementary

Secondary

Federal

Total

300 Purchased Professional and Technical Services

330 Other Professional Services

29,071.20

Total Purchased Professional and Technical Services

\$29,071.20

Total 2350 Legal and Accounting Services

\$29,071.20

LEA : 116191103 Berwick Area SD

Printed 10/29/2020 1:38:40 PM

General Fund (10)

2380 Office of the Principal Services

100 Personnel Services – Salaries

	<u>Elementary</u>	<u>Secondary</u>	<u>Federal</u>	<u>Total</u>
100 Personnel Services – Salaries	436,882.12	499,945.77		936,827.89
Total Personnel Services – Salaries	\$436,882.12	\$499,945.77		\$936,827.89

200 Personnel Services – Employee Benefits

210 Group Insurance – Contracted Provider	106,354.97	129,746.61		236,101.58
220 Social Security Contributions	32,690.11	37,552.88		70,242.99
230 PSERS Retirement Contributions	146,935.53	166,289.56		313,225.09
250 Unemployment Compensation	557.84	635.02		1,192.86
260 Workers' Compensation	3,363.89	3,849.62		7,213.51
299 All Other Employee Benefits	1,500.00			1,500.00
Total Personnel Services – Employee Benefits	\$291,402.34	\$338,073.69		\$629,476.03

500 Other Purchased Services

530 Communications	3,288.18	3,822.30		7,110.48
550 Printing and Binding	185.65	7,233.50		7,419.15
580 Travel		107.73		107.73
Total Other Purchased Services	\$3,473.83	\$11,163.53		\$14,637.36

600 Supplies

610 General Supplies	2,233.98	3,218.22		5,452.20
Total Supplies	\$2,233.98	\$3,218.22		\$5,452.20

800 Other Objects

810 Dues and Fees	1,785.00	2,380.00		4,165.00
Total Other Objects	\$1,785.00	\$2,380.00		\$4,165.00

Total 2380 Office of the Principal Services

	\$735,777.27	\$854,781.21		\$1,590,558.48
--	---------------------	---------------------	--	-----------------------

LEA : 116191103 Berwick Area SD

Printed 10/29/2020 1:38:40 PM

General Fund (10)

2390 Other Administration Services

Elementary

Secondary

Federal

Total

300 Purchased Professional and Technical Services

390 Other Purchased Professional and Technical Services

30,331.64

Total Purchased Professional and Technical Services

\$30,331.64

Total 2390 Other Administration Services

\$30,331.64

General Fund (10)

	<u>Elementary</u>	<u>Secondary</u>	<u>Federal</u>	<u>Total</u>
2400 Support Services – Pupil Health				
100 Personnel Services – Salaries				
100 Personnel Services – Salaries			1,647.50	355,697.44
Total Personnel Services – Salaries			\$1,647.50	\$355,697.44
200 Personnel Services – Employee Benefits				
210 Group Insurance – Contracted Provider				131,646.00
220 Social Security Contributions			126.03	26,090.88
230 PSERS Retirement Contributions			282.46	120,924.02
250 Unemployment Compensation				690.31
260 Workers' Compensation			12.69	2,739.01
280 Other Post-Employment Benefits (OPEB)				30,670.00
Total Personnel Services – Employee Benefits			\$421.18	\$312,760.22
300 Purchased Professional and Technical Services				
330 Other Professional Services				5,150.00
Total Purchased Professional and Technical Services				\$5,150.00
500 Other Purchased Services				
520 Insurance – General				307.00
580 Travel				185.78
Total Other Purchased Services				\$492.78
600 Supplies				
610 General Supplies				7,258.70
Total Supplies				\$7,258.70
Total 2400 Support Services – Pupil Health			\$2,068.68	\$681,359.14

General Fund (10)

2420 Medical Services

Elementary

Secondary

Federal

Total

300 Purchased Professional and Technical Services

330 Other Professional Services

4,800.00

Total Purchased Professional and Technical Services

\$4,800.00

600 Supplies

610 General Supplies

(318.67)

Total Supplies

(\$318.67)

Total 2420 Medical Services

\$4,481.33

LEA : 116191103 Berwick Area SD

Printed 10/29/2020 1:38:40 PM

General Fund (10)

2430 Dental Services

Elementary

Secondary

Federal

Total

300 Purchased Professional and Technical Services

330 Other Professional Services

350.00

Total Purchased Professional and Technical Services

\$350.00

Total 2430 Dental Services

\$350.00

General Fund (10)

2440 Nursing Services

100 Personnel Services – Salaries

	<u>Elementary</u>	<u>Secondary</u>	<u>Federal</u>	<u>Total</u>
100 Personnel Services – Salaries			1,647.50	355,697.44

Total Personnel Services – Salaries			\$1,647.50	\$355,697.44
--	--	--	-------------------	---------------------

200 Personnel Services – Employee Benefits

210 Group Insurance – Contracted Provider				131,646.00
---	--	--	--	------------

220 Social Security Contributions			126.03	26,090.88
-----------------------------------	--	--	--------	-----------

230 PSERS Retirement Contributions			282.46	120,924.02
------------------------------------	--	--	--------	------------

250 Unemployment Compensation				690.31
-------------------------------	--	--	--	--------

260 Workers' Compensation			12.69	2,739.01
---------------------------	--	--	-------	----------

280 Other Post-Employment Benefits (OPEB)				30,670.00
---	--	--	--	-----------

Total Personnel Services – Employee Benefits			\$421.18	\$312,760.22
---	--	--	-----------------	---------------------

500 Other Purchased Services

520 Insurance – General				307.00
-------------------------	--	--	--	--------

580 Travel				185.78
------------	--	--	--	--------

Total Other Purchased Services				\$492.78
---------------------------------------	--	--	--	-----------------

600 Supplies

610 General Supplies				7,577.37
----------------------	--	--	--	----------

Total Supplies				\$7,577.37
-----------------------	--	--	--	-------------------

Total 2440 Nursing Services			\$2,068.68	\$676,527.81
------------------------------------	--	--	-------------------	---------------------

LEA : 116191103 Berwick Area SD

Printed 10/29/2020 1:38:40 PM

General Fund (10)

2500 Support Services – Business

Elementary Secondary Federal Total

100 Personnel Services – Salaries

100 Personnel Services – Salaries 334,025.06

Total Personnel Services – Salaries \$334,025.06

200 Personnel Services – Employee Benefits

210 Group Insurance – Contracted Provider 76,335.80

220 Social Security Contributions 25,155.24

230 PSERS Retirement Contributions 112,001.72

250 Unemployment Compensation 396.00

260 Workers' Compensation 2,572.25

280 Other Post-Employment Benefits (OPEB) 66,794.00

299 All Other Employee Benefits 1,500.00

Total Personnel Services – Employee Benefits \$284,755.01

300 Purchased Professional and Technical Services

390 Other Purchased Professional and Technical Services 22,197.05

Total Purchased Professional and Technical Services \$22,197.05

500 Other Purchased Services

530 Communications 1,096.06

550 Printing and Binding 75.00

580 Travel 88.16

Total Other Purchased Services \$1,259.22

600 Supplies

610 General Supplies 10,100.45

Total Supplies \$10,100.45

800 Other Objects

810 Dues and Fees 724.98

Total Other Objects \$724.98

Total 2500 Support Services – Business \$653,061.77

LEA : 116191103 Berwick Area SD

Printed 10/29/2020 1:38:40 PM

General Fund (10)

2510 Fiscal Services

Elementary Secondary Federal Total

100	<u>Personnel Services – Salaries</u>				
	100 Personnel Services – Salaries				334,025.06
Total Personnel Services – Salaries					\$334,025.06
200	<u>Personnel Services – Employee Benefits</u>				
	210 Group Insurance – Contracted Provider				76,335.80
	220 Social Security Contributions				25,155.24
	230 PSERS Retirement Contributions				112,001.72
	250 Unemployment Compensation				396.00
	260 Workers' Compensation				2,572.25
	280 Other Post-Employment Benefits (OPEB)				66,794.00
	299 All Other Employee Benefits				1,500.00
Total Personnel Services – Employee Benefits					\$284,755.01
300	<u>Purchased Professional and Technical Services</u>				
	390 Other Purchased Professional and Technical Services				22,197.05
Total Purchased Professional and Technical Services					\$22,197.05
500	<u>Other Purchased Services</u>				
	530 Communications				1,096.06
	550 Printing and Binding				75.00
	580 Travel				88.16
Total Other Purchased Services					\$1,259.22
600	<u>Supplies</u>				
	610 General Supplies				10,100.45
Total Supplies					\$10,100.45
800	<u>Other Objects</u>				
	810 Dues and Fees				724.98
Total Other Objects					\$724.98
Total 2510 Fiscal Services					\$653,061.77

General Fund (10)

2511 Supervision of Fiscal Services - Head of Component

Elementary Secondary Federal Total

100 Personnel Services – Salaries				
100 Personnel Services – Salaries				89,099.26
Total Personnel Services – Salaries				\$89,099.26
200 Personnel Services – Employee Benefits				
210 Group Insurance – Contracted Provider				12,818.64
220 Social Security Contributions				6,751.12
230 PSERS Retirement Contributions				29,946.72
250 Unemployment Compensation				66.00
260 Workers' Compensation				686.08
280 Other Post-Employment Benefits (OPEB)				5,000.00
Total Personnel Services – Employee Benefits				\$55,268.56
300 Purchased Professional and Technical Services				
390 Other Purchased Professional and Technical Services				22,197.05
Total Purchased Professional and Technical Services				\$22,197.05
500 Other Purchased Services				
530 Communications				1,096.06
550 Printing and Binding				75.00
580 Travel				88.16
Total Other Purchased Services				\$1,259.22
600 Supplies				
610 General Supplies				10,100.45
Total Supplies				\$10,100.45
800 Other Objects				
810 Dues and Fees				425.98
Total Other Objects				\$425.98
Total 2511 Supervision of Fiscal Services - Head of Component				\$178,350.52

General Fund (10)

2513 Receiving and Disbursing Funds Services

Elementary

Secondary

Federal

Total

100 Personnel Services – Salaries

100 Personnel Services – Salaries

49,528.80

Total Personnel Services – Salaries

\$49,528.80

200 Personnel Services – Employee Benefits

210 Group Insurance – Contracted Provider

40.80

220 Social Security Contributions

3,789.14

230 PSERS Retirement Contributions

16,110.68

250 Unemployment Compensation

66.01

260 Workers' Compensation

381.44

Total Personnel Services – Employee Benefits

\$20,388.07

Total 2513 Receiving and Disbursing Funds Services

\$69,916.87

LEA : 116191103 Berwick Area SD

Printed 10/29/2020 1:38:40 PM

General Fund (10)

2514 Payroll Services

Elementary

Secondary

Federal

Total

100 Personnel Services – Salaries

100 Personnel Services – Salaries

53,441.00

Total Personnel Services – Salaries

\$53,441.00

200 Personnel Services – Employee Benefits

210 Group Insurance – Contracted Provider

15,363.96

220 Social Security Contributions

4,052.16

230 PSERS Retirement Contributions

18,233.51

250 Unemployment Compensation

32.98

260 Workers' Compensation

411.59

280 Other Post-Employment Benefits (OPEB)

61,794.00

299 All Other Employee Benefits

1,500.00

Total Personnel Services – Employee Benefits

\$101,388.20

800 Other Objects

810 Dues and Fees

299.00

Total Other Objects

\$299.00

Total 2514 Payroll Services

\$155,128.20

General Fund (10)

2515 Financial Accounting Services

Elementary

Secondary

Federal

Total

100 Personnel Services – Salaries

100 Personnel Services – Salaries

141,956.00

Total Personnel Services – Salaries

\$141,956.00

200 Personnel Services – Employee Benefits

210 Group Insurance – Contracted Provider

48,112.40

220 Social Security Contributions

10,562.82

230 PSERS Retirement Contributions

47,710.81

250 Unemployment Compensation

231.01

260 Workers' Compensation

1,093.14

Total Personnel Services – Employee Benefits

\$107,710.18

Total 2515 Financial Accounting Services

\$249,666.18

General Fund (10)

	<u>Elementary</u>	<u>Secondary</u>	<u>Federal</u>	<u>Total</u>
2610 Supervision of Operation and Maintenance of Plant Services				
100 Personnel Services – Salaries				
100 Personnel Services – Salaries				4,200.00
Total Personnel Services – Salaries				\$4,200.00
200 Personnel Services – Employee Benefits				
220 Social Security Contributions				334.60
260 Workers' Compensation				32.34
Total Personnel Services – Employee Benefits				\$366.94
Total 2610 Supervision of Operation and Maintenance of Plant Services				\$4,566.94

General Fund (10)

2611 Supervision of Operation and Maintenance of Plant Services – Head of Component

Elementary

Secondary

Federal

Total

100 Personnel Services – Salaries

100 Personnel Services – Salaries

4,200.00

Total Personnel Services – Salaries

\$4,200.00

200 Personnel Services – Employee Benefits

220 Social Security Contributions

334.60

260 Workers' Compensation

32.34

Total Personnel Services – Employee Benefits

\$366.94

Total 2611 Supervision of Operation and Maintenance of Plant Services – Head of Component

\$4,566.94

General Fund (10)

	<u>Elementary</u>	<u>Secondary</u>	<u>Federal</u>	<u>Total</u>
2620 Operation of Buildings Services				
100 Personnel Services – Salaries				
100 Personnel Services – Salaries				1,281,449.33
Total Personnel Services – Salaries				\$1,281,449.33
200 Personnel Services – Employee Benefits				
210 Group Insurance – Contracted Provider				462,044.74
220 Social Security Contributions				95,412.60
230 PSERS Retirement Contributions				434,314.49
250 Unemployment Compensation				2,345.47
260 Workers' Compensation				9,879.10
280 Other Post-Employment Benefits (OPEB)				15,640.00
Total Personnel Services – Employee Benefits				\$1,019,636.40
300 Purchased Professional and Technical Services				
330 Other Professional Services				1,490.50
390 Other Purchased Professional and Technical Services				118,950.65
Total Purchased Professional and Technical Services				\$120,441.15
400 Purchased Property Services				
410 Cleaning Services				36,032.10
420 Utility Services				89,809.44
430 Repairs and Maintenance Services				146,942.89
440 Rentals				7,872.15
460 Extermination Services				16,282.77
490 Other Purchased Property Services				500.00
Total Purchased Property Services				\$297,439.35
500 Other Purchased Services				
522 Automotive Liability Insurance				22,006.00
523 General Property and Liability Insurance				194,794.00
529 Other Insurance				51,135.00
530 Communications				76,138.46
Total Other Purchased Services				\$344,073.46
600 Supplies				
610 General Supplies	84,673.25	120,097.56	4,994.55	209,765.36
620 Energy				562,661.95
Total Supplies	\$84,673.25	\$120,097.56	\$4,994.55	\$772,427.31
800 Other Objects				
810 Dues and Fees				65.00
Total Other Objects				\$65.00
Total 2620 Operation of Buildings Services	\$84,673.25	\$120,097.56	\$4,994.55	\$3,835,532.00

General Fund (10)

	<u>Elementary</u>	<u>Secondary</u>	<u>Federal</u>	<u>Total</u>
2650 Vehicle Operation and Maintenance Services (Other Than Student Transportation Vehicles)				
300 <u>Purchased Professional and Technical Services</u>				
390 Other Purchased Professional and Technical Services				1,850.20
Total Purchased Professional and Technical Services				\$1,850.20
700 <u>Property</u>				
790 Other Property				8,200.00
Total Property				\$8,200.00
Total 2650 Vehicle Operation and Maintenance Services (Other Than Student Transportation Vehicles)				\$10,050.20

General Fund (10)

	<u>Elementary</u>	<u>Secondary</u>	<u>Federal</u>	<u>Total</u>
2660 Safety and Security Services				
100 Personnel Services – Salaries				
100 Personnel Services – Salaries				138,195.55
Total Personnel Services – Salaries				\$138,195.55
200 Personnel Services – Employee Benefits				
220 Social Security Contributions				10,572.12
230 PSERS Retirement Contributions				47,367.85
250 Unemployment Compensation				261.60
260 Workers' Compensation				1,064.07
Total Personnel Services – Employee Benefits				\$59,265.64
500 Other Purchased Services				
530 Communications				2,449.45
Total Other Purchased Services				\$2,449.45
600 Supplies				
610 General Supplies	1,577.19	1,577.18		3,154.37
Total Supplies	\$1,577.19	\$1,577.18		\$3,154.37
Total 2660 Safety and Security Services	\$1,577.19	\$1,577.18		\$203,065.01

General Fund (10)

2700 Student Transportation Services

Elementary Secondary Federal Total

100 Personnel Services – Salaries

100 Personnel Services – Salaries 47,494.72

Total Personnel Services – Salaries \$47,494.72

200 Personnel Services – Employee Benefits

210 Group Insurance – Contracted Provider 32.64

220 Social Security Contributions 3,633.50

230 PSERS Retirement Contributions 16,270.17

250 Unemployment Compensation 52.81

260 Workers' Compensation 365.82

Total Personnel Services – Employee Benefits \$20,354.94

300 Purchased Professional and Technical Services

390 Other Purchased Professional and Technical Services 3,957.75

Total Purchased Professional and Technical Services \$3,957.75

400 Purchased Property Services

430 Repairs and Maintenance Services (3,889.89)

Total Purchased Property Services (\$3,889.89)

500 Other Purchased Services

513 Contracted Carriers 1,869,079.53

516 Student Transportation Services From the IU 75,178.58

530 Communications 140.47

Total Other Purchased Services \$1,944,398.58

600 Supplies

610 General Supplies 366.06

Total Supplies \$366.06

800 Other Objects

810 Dues and Fees 156.60

Total Other Objects \$156.60

Total 2700 Student Transportation Services \$2,012,838.76

General Fund (10)

2720 Vehicle Operation Services

Elementary Secondary Federal Total

100	<u>Personnel Services – Salaries</u>			
	100 Personnel Services – Salaries			47,494.72
Total Personnel Services – Salaries				\$47,494.72
200	<u>Personnel Services – Employee Benefits</u>			
	210 Group Insurance – Contracted Provider			32.64
	220 Social Security Contributions			3,633.50
	230 PSERS Retirement Contributions			16,270.17
	250 Unemployment Compensation			52.81
	260 Workers' Compensation			365.82
Total Personnel Services – Employee Benefits				\$20,354.94
300	<u>Purchased Professional and Technical Services</u>			
	390 Other Purchased Professional and Technical Services			3,957.75
Total Purchased Professional and Technical Services				\$3,957.75
500	<u>Other Purchased Services</u>			
	513 Contracted Carriers			1,717,927.48
	530 Communications			140.47
Total Other Purchased Services				\$1,718,067.95
600	<u>Supplies</u>			
	610 General Supplies			366.06
Total Supplies				\$366.06
800	<u>Other Objects</u>			
	810 Dues and Fees			156.60
Total Other Objects				\$156.60
Total 2720 Vehicle Operation Services				\$1,790,398.02

LEA : 116191103 Berwick Area SD

Printed 10/29/2020 1:38:40 PM

General Fund (10)

2740 Vehicle Servicing and Maintenance Services

Elementary

Secondary

Federal

Total

400 Purchased Property Services

430 Repairs and Maintenance Services

(3,889.89)

Total Purchased Property Services

(\$3,889.89)

Total 2740 Vehicle Servicing and Maintenance Services

(\$3,889.89)

LEA : 116191103 Berwick Area SD

Printed 10/29/2020 1:38:40 PM

General Fund (10)

2750 Nonpublic Transportation

Elementary

Secondary

Federal

Total

500 Other Purchased Services

513 Contracted Carriers

151,152.05

Total Other Purchased Services

\$151,152.05

Total 2750 Nonpublic Transportation

\$151,152.05

LEA : 116191103 Berwick Area SD

Printed 10/29/2020 1:38:40 PM

General Fund (10)

2790 Other Student Transportation Services

Elementary

Secondary

Federal

Total

500 Other Purchased Services

516 Student Transportation Services From the IU

75,178.58

Total Other Purchased Services

\$75,178.58

Total 2790 Other Student Transportation Services

\$75,178.58

General Fund (10)

2830 Staff Services

	<u>Elementary</u>	<u>Secondary</u>	<u>Federal</u>	<u>Total</u>
100 Personnel Services – Salaries				
100 Personnel Services – Salaries				186.68
Total Personnel Services – Salaries				\$186.68
200 Personnel Services – Employee Benefits				
220 Social Security Contributions				13.80
230 PSERS Retirement Contributions				64.02
240 Tuition Reimbursement				35,653.00
260 Workers' Compensation				1.44
Total Personnel Services – Employee Benefits				\$35,732.26
300 Purchased Professional and Technical Services				
360 Employee Training and Development Services			1,587.00	23,875.39
Total Purchased Professional and Technical Services			\$1,587.00	\$23,875.39
500 Other Purchased Services				
580 Travel				2,766.32
Total Other Purchased Services				\$2,766.32
Total 2830 Staff Services			\$1,587.00	\$62,560.65

General Fund (10)

	<u>Elementary</u>	<u>Secondary</u>	<u>Federal</u>	<u>Total</u>
2834 Staff Development Services – Non-Instructional, Certified Staff Only				
100 Personnel Services – Salaries				
100 Personnel Services – Salaries				186.68
Total Personnel Services – Salaries				\$186.68
200 Personnel Services – Employee Benefits				
220 Social Security Contributions				13.80
230 PSERS Retirement Contributions				64.02
240 Tuition Reimbursement				35,653.00
260 Workers' Compensation				1.44
Total Personnel Services – Employee Benefits				\$35,732.26
300 Purchased Professional and Technical Services				
360 Employee Training and Development Services			1,107.00	19,327.32
Total Purchased Professional and Technical Services			\$1,107.00	\$19,327.32
500 Other Purchased Services				
580 Travel				2,295.78
Total Other Purchased Services				\$2,295.78
Total 2834 Staff Development Services – Non-Instructional, Certified Staff Only			\$1,107.00	\$57,542.04

General Fund (10)

	<u>Elementary</u>	<u>Secondary</u>	<u>Federal</u>	<u>Total</u>
2836 Staff Development Services – Non-Instructional, Non-Certified Staff Only				
300 <u>Purchased Professional and Technical Services</u>				
360 Employee Training and Development Services			480.00	4,548.07
Total Purchased Professional and Technical Services			\$480.00	\$4,548.07
500 <u>Other Purchased Services</u>				
580 Travel				470.54
Total Other Purchased Services				\$470.54
Total 2836 Staff Development Services – Non-Instructional, Non-Certified Staff Only			\$480.00	\$5,018.61

General Fund (10)

2860 Management Services

Elementary

Secondary

Federal

Total

300 Purchased Professional and Technical Services

330 Other Professional Services

47,235.79

390 Other Purchased Professional and Technical Services

93,417.75

Total Purchased Professional and Technical Services

\$140,653.54

500 Other Purchased Services

530 Communications

29,592.13

549 Other Advertising/Public Relations

22,913.00

Total Other Purchased Services

\$52,505.13

600 Supplies

610 General Supplies

3,645.87

Total Supplies

\$3,645.87

Total 2860 Management Services

\$196,804.54

General Fund (10)

3000 Operation of Non-Instructional Services	<u>Total</u>
100 Personnel Services – Salaries	
100 Personnel Services – Salaries	411,535.99
Total Personnel Services – Salaries	\$411,535.99
200 Personnel Services – Employee Benefits	
210 Group Insurance – Contracted Provider	10,273.32
220 Social Security Contributions	31,446.57
230 PSERS Retirement Contributions	131,256.54
250 Unemployment Compensation	862.79
260 Workers' Compensation	3,169.00
Total Personnel Services – Employee Benefits	\$177,008.22
300 Purchased Professional and Technical Services	
330 Other Professional Services	33,113.83
340 Technical Services	5,099.00
390 Other Purchased Professional and Technical Services	98,824.73
Total Purchased Professional and Technical Services	\$137,037.56
400 Purchased Property Services	
410 Cleaning Services	3,390.00
430 Repairs and Maintenance Services	1,401.00
440 Rentals	4,960.00
Total Purchased Property Services	\$9,751.00
500 Other Purchased Services	
510 Student Transportation Services	16,652.74
530 Communications	1,632.49
550 Printing and Binding	1,347.72
580 Travel	63,151.71
Total Other Purchased Services	\$82,784.66
600 Supplies	
610 General Supplies	156,176.68
Total Supplies	\$156,176.68
800 Other Objects	
810 Dues and Fees	9,905.00
Total Other Objects	\$9,905.00
Total 3000 Operation of Non-Instructional Services	\$984,199.11

General Fund (10)

3200 Student Activities

Elementary

Secondary

Federal

Total

100 Personnel Services – Salaries

100 Personnel Services – Salaries

411,535.99

Total Personnel Services – Salaries

\$411,535.99

200 Personnel Services – Employee Benefits

210 Group Insurance – Contracted Provider

10,273.32

220 Social Security Contributions

31,446.57

230 PSERS Retirement Contributions

131,256.54

250 Unemployment Compensation

862.79

260 Workers' Compensation

3,169.00

Total Personnel Services – Employee Benefits

\$177,008.22

300 Purchased Professional and Technical Services

330 Other Professional Services

33,113.83

340 Technical Services

5,099.00

390 Other Purchased Professional and Technical Services

96,798.72

Total Purchased Professional and Technical Services

\$135,011.55

400 Purchased Property Services

410 Cleaning Services

3,390.00

430 Repairs and Maintenance Services

1,401.00

440 Rentals

4,960.00

Total Purchased Property Services

\$9,751.00

500 Other Purchased Services

510 Student Transportation Services

16,652.74

530 Communications

1,632.49

550 Printing and Binding

1,347.72

580 Travel

63,151.71

Total Other Purchased Services

\$82,784.66

600 Supplies

610 General Supplies

147,357.82

Total Supplies

\$147,357.82

800 Other Objects

810 Dues and Fees

9,905.00

Total Other Objects

\$9,905.00

Total 3200 Student Activities

\$973,354.24

General Fund (10)

3300 Community Services

Elementary

Secondary

Federal

Total

300 Purchased Professional and Technical Services

390 Other Purchased Professional and Technical Services

2,026.01

Total Purchased Professional and Technical Services

\$2,026.01

600 Supplies

610 General Supplies

8,818.86

8,818.86

Total Supplies

\$8,818.86

\$8,818.86

Total 3300 Community Services

\$8,818.86

\$10,844.87

General Fund (10)

4000 Facilities Acquisition, Construction and Improvement Services

Total

300 Purchased Professional and Technical Services

330 Other Professional Services 73,029.42

390 Other Purchased Professional and Technical Services 701,620.68

Total Purchased Professional and Technical Services \$774,650.10

400 Purchased Property Services

490 Other Purchased Property Services 18,255.00

Total Purchased Property Services \$18,255.00

600 Supplies

610 General Supplies 3,663.00

Total Supplies \$3,663.00

700 Property

762 Capitalized Equipment - Replacement 20,163.00

790 Other Property 47,059.00

Total Property \$67,222.00

Total 4000 Facilities Acquisition, Construction and Improvement Services \$863,790.10

LEA : 116191103 Berwick Area SD

Printed 10/29/2020 1:39:10 PM

General Fund (10)

4100 Site Acquisition Services – Original and Additional

Elementary

Secondary

Federal

Total

300 Purchased Professional and Technical Services

330 Other Professional Services

2,095.00

Total Purchased Professional and Technical Services

\$2,095.00

Total 4100 Site Acquisition Services – Original and Additional

\$2,095.00

LEA : 116191103 Berwick Area SD

Printed 10/29/2020 1:39:10 PM

General Fund (10)

	<u>Elementary</u>	<u>Secondary</u>	<u>Federal</u>	<u>Total</u>
4200 Existing Site Improvement Services				
300 <u>Purchased Professional and Technical Services</u>				
390 Other Purchased Professional and Technical Services				(59,574.80)
Total Purchased Professional and Technical Services				(\$59,574.80)
400 <u>Purchased Property Services</u>				
490 Other Purchased Property Services				18,255.00
Total Purchased Property Services				\$18,255.00
Total 4200 Existing Site Improvement Services				(\$41,319.80)

General Fund (10)

4300 Architecture and Engineering Services / Educational Specifications Development – Original and Additional

Elementary

Secondary

Federal

Total

300 Purchased Professional and Technical Services

330 Other Professional Services

70,934.42

390 Other Purchased Professional and Technical Services

227,438.48

Total Purchased Professional and Technical Services

\$298,372.90

600 Supplies

610 General Supplies

3,663.00

Total Supplies

\$3,663.00

Total 4300 Architecture and Engineering Services / Educational Specifications Development – Original and Additional

\$302,035.90

General Fund (10)

	<u>Elementary</u>	<u>Secondary</u>	<u>Federal</u>	<u>Total</u>
4600 Existing Building Improvement Services				
300 <u>Purchased Professional and Technical Services</u>				
390 Other Purchased Professional and Technical Services				533,757.00
Total Purchased Professional and Technical Services				\$533,757.00
700 <u>Property</u>				
762 Capitalized Equipment - Replacement				20,163.00
790 Other Property			47,059.00	47,059.00
Total Property			\$47,059.00	\$67,222.00
Total 4600 Existing Building Improvement Services			\$47,059.00	\$600,979.00

General Fund (10)

5000 Other Expenditures and Financing Uses

Total

800 Other Objects

830 Interest 510,586.93

880 Refunds of Prior Years' Receipts 1,627.39

Total Other Objects \$512,214.32

900 Other Uses of Funds

910 Redemption of Principal 920,000.00

920 Authority Obligations 73,643.50

Total Other Uses of Funds \$993,643.50

Total 5000 Other Expenditures and Financing Uses \$1,505,857.82

LEA : 116191103 Berwick Area SD

Printed 10/29/2020 1:39:30 PM

General Fund (10)

5100 Debt Service / Other Expenditures and Financing Uses	<u>Elementary</u>	<u>Secondary</u>	<u>Federal</u>	<u>Total</u>
800 Other Objects				
830 Interest				510,586.93
880 Refunds of Prior Years' Receipts				1,627.39
Total Other Objects				\$512,214.32
900 Other Uses of Funds				
910 Redemption of Principal				920,000.00
920 Authority Obligations				73,643.50
Total Other Uses of Funds				\$993,643.50
Total 5100 Debt Service / Other Expenditures and Financing Uses				\$1,505,857.82

LEA : 116191103 Berwick Area SD

Printed 10/29/2020 1:39:30 PM

General Fund (10)

	<u>Elementary</u>	<u>Secondary</u>	<u>Federal</u>	<u>Total</u>
5110 Debt Service				
800 Other Objects				
830 Interest				510,586.93
Total Other Objects				\$510,586.93
900 Other Uses of Funds				
910 Redemption of Principal				920,000.00
920 Authority Obligations				73,643.50
Total Other Uses of Funds				\$993,643.50
Total 5110 Debt Service				\$1,504,230.43

LEA : 116191103 Berwick Area SD

Printed 10/29/2020 1:39:30 PM

General Fund (10)

5130 Refund of Prior Year Revenues / Receipts

Elementary

Secondary

Federal

Total

800 Other Objects

880 Refunds of Prior Years' Receipts

1,627.39

Total Other Objects

\$1,627.39

Total 5130 Refund of Prior Year Revenues / Receipts

\$1,627.39

	<u>General Fund(10)</u>	<u>Student Sponsored Activity Fund(21)</u>	<u>Public Purpose Trust(27)</u>	<u>Other Compt Approved (28)</u>	<u>Athletic / Activity(29)</u>
1000 Instruction					
1100 Regular Programs - Elementary / Secondary	20,389,832.30				
1200 Special Programs - Elementary / Secondary	7,766,320.89				
1300 Vocational Education	2,748,067.37				
1400 Other Instructional Programs - Elementary / Secondary	97,551.22				
1500 Nonpublic School Programs	12,125.00				
1700 Higher Education Programs for Secondary Students	30,330.33				
Total Instruction	\$31,044,227.11				
2000 Support Services					
2100 Support Services - Students	1,957,714.33				
2200 Support Services - Instructional Staff	1,147,462.56				
2300 Support Services - Administration	2,366,435.04				
2400 Support Services - Pupil Health	681,359.14				
2500 Support Services - Business	653,061.77				
2600 Operation and Maintenance of Plant Services	4,053,214.15				
2700 Student Transportation Services	2,012,838.76				
2800 Support Services - Central	1,159,681.90				
Total Support Services	\$14,031,767.65				
3000 Operation of Non-Instructional Services					
3200 Student Activities	973,354.24				
3300 Community Services	10,844.87				
Total Operation of Non-Instructional Services	\$984,199.11				
4000 Facilities Acquisition, Construction and Improvement Services					
4100 Site Acquisition Services - Original and Additional	2,095.00				
4200 Existing Site Improvement Services	(41,319.80)				
4300 Architecture and Engineering Services / Educational Specifications Development - Original and Additional	302,035.90				
4600 Existing Building Improvement Services	600,979.00				
Total Facilities Acquisition, Construction and Improvement Services	\$863,790.10				
5000 Other Expenditures and Financing Uses					
5100 Debt Service / Other Expenditures and Financing Uses	1,505,857.82				
Total Other Expenditures and Financing Uses	\$1,505,857.82				
TOTAL ACTUAL EXPENDITURES & OTHER FINANCING USES	\$48,429,841.79				

<u>Capital Reserve (690.</u>	<u>Capital Reserve (1431)(32)</u>	<u>Other Capital Projects</u>	<u>Debt Service(40)</u>	<u>Permanent(90)</u>
<u>1850)(31)</u>		<u>Fund(39)</u>		

- 1000 Instruction**
- 1100 Regular Programs - Elementary / Secondary
- 1200 Special Programs - Elementary / Secondary
- 1300 Vocational Education
- 1400 Other Instructional Programs - Elementary / Secondary
- 1500 Nonpublic School Programs
- 1700 Higher Education Programs for Secondary Students

Total Instruction

- 2000 Support Services**
- 2100 Support Services - Students
- 2200 Support Services - Instructional Staff
- 2300 Support Services - Administration
- 2400 Support Services - Pupil Health
- 2500 Support Services - Business
- 2600 Operation and Maintenance of Plant Services
- 2700 Student Transportation Services
- 2800 Support Services - Central

Total Support Services

- 3000 Operation of Non-Instructional Services**
- 3200 Student Activities
- 3300 Community Services

Total Operation of Non-Instructional Services

- 4000 Facilities Acquisition, Construction and Improvement Services**
- 4100 Site Acquisition Services - Original and Additional
- 4200 Existing Site Improvement Services
- 4300 Architecture and Engineering Services / Educational Specifications Development - Original and Additional
- 4600 Existing Building Improvement Services

Total Facilities Acquisition, Construction and Improvement Services

- 5000 Other Expenditures and Financing Uses**
- 5100 Debt Service / Other Expenditures and Financing Uses

Total Other Expenditures and Financing Uses

TOTAL ACTUAL EXPENDITURES & OTHER FINANCING USES

Total

1000 Instruction

1100 Regular Programs - Elementary / Secondary	20,389,832.30
1200 Special Programs - Elementary / Secondary	7,766,320.89
1300 Vocational Education	2,748,067.37
1400 Other Instructional Programs - Elementary / Secondary	97,551.22
1500 Nonpublic School Programs	12,125.00
1700 Higher Education Programs for Secondary Students	30,330.33

Total Instruction	\$31,044,227.11
--------------------------	------------------------

2000 Support Services

2100 Support Services - Students	1,957,714.33
2200 Support Services - Instructional Staff	1,147,462.56
2300 Support Services - Administration	2,366,435.04
2400 Support Services - Pupil Health	681,359.14
2500 Support Services - Business	653,061.77
2600 Operation and Maintenance of Plant Services	4,053,214.15
2700 Student Transportation Services	2,012,838.76
2800 Support Services - Central	1,159,681.90

Total Support Services	\$14,031,767.65
-------------------------------	------------------------

3000 Operation of Non-Instructional Services

3200 Student Activities	973,354.24
3300 Community Services	10,844.87

Total Operation of Non-Instructional Services	\$984,199.11
--	---------------------

4000 Facilities Acquisition, Construction and Improvement Services

4100 Site Acquisition Services - Original and Additional	2,095.00
4200 Existing Site Improvement Services	(41,319.80)
4300 Architecture and Engineering Services / Educational Specifications Development - Original and Additional	302,035.90
4600 Existing Building Improvement Services	600,979.00

Total Facilities Acquisition, Construction and Improvement Services	\$863,790.10
--	---------------------

5000 Other Expenditures and Financing Uses

5100 Debt Service / Other Expenditures and Financing Uses	1,505,857.82
---	--------------

Total Other Expenditures and Financing Uses	\$1,505,857.82
--	-----------------------

TOTAL ACTUAL EXPENDITURES & OTHER FINANCING USES	\$48,429,841.79
---	------------------------

LEA : 116191103 Berwick Area SD

Printed 10/29/2020 1:40:33 PM

PSERS Salary Data (Salary Data should relate to the General Fund only)

Amount Description	Amount
Total Salary Base for salaries subject to PSERS withholding	20,776,993.06
Total Federally Funded salaries subject to PSERS withholding	1,575,161.94
	<hr/>

Title I Expenditure Data

Amount Description	Amount
Expenditures Funded with Current Title I Funds	810,545.99
Expenditures Funded with Carry over Title I Funds	33,890.43
	<hr/>
Total Title I Expenditure Data	\$844,436.42
	<hr/>

Benefits for Staff Relative to Collective Bargaining Agreements

	OBJECT	COVERED	NOT COVERED	TOTAL
10 General Fund	No Self Insurance data to report			
	211 Medical Insurance	5,471,937.00	378,484.17	5,850,421.17
	212 Dental Insurance	145,705.28		145,705.28
	215 Eye Care Insurance	32,423.40		32,423.40
	216 Prescription Insurance			
	271 Self-Insurance Medical Benefits			
	272 Self-Insurance Dental Benefits			
	275 Self-Insurance Eye Care Benefits			
	276 Self-Insurance Prescription Benefits			
	FUND TOTAL	\$5,650,065.68	\$378,484.17	\$6,028,549.85
50 Enterprise Fund	No Self Insurance data to report			
	211 Medical Insurance	80,834.00		80,834.00
	212 Dental Insurance	2,108.42		2,108.42
	215 Eye Care Insurance	470.00		470.00
	216 Prescription Insurance			
	271 Self-Insurance Medical Benefits			
	272 Self-Insurance Dental Benefits			
	275 Self-Insurance Eye Care Benefits			
	276 Self-Insurance Prescription Benefits			
	FUND TOTAL	\$83,412.42		\$83,412.42
60 Internal Service Fund	No Self Insurance data to report			
	211 Medical Insurance			
	212 Dental Insurance			
	215 Eye Care Insurance			
	216 Prescription Insurance			
	271 Self-Insurance Medical Benefits			
	272 Self-Insurance Dental Benefits			
	275 Self-Insurance Eye Care Benefits			
	276 Self-Insurance Prescription Benefits			
	FUND TOTAL			
Total of All Funds		\$5,733,478.10	\$378,484.17	\$6,111,962.27

LEA : 116191103 Berwick Area SD

Printed 10/29/2020 1:41:11 PM

Function	Special Education (Prior Year)	Nonspecial Education (Prior Year)	Total (Prior Year)	Special Education (Current Year)	Nonspecial Education (Current Year)	Total (Current Year)
2120 Guidance Services	188,463.85	989,435.20	1,177,899.05	259,273.45	981,269.39	1,240,542.84
2140 Psychological Services	23,399.93	122,849.62	146,249.55	32,302.71	122,255.72	154,558.43
2150 Speech Pathology and Audiology Services						
2160 Social Work Services	6,140.22	32,236.16	38,376.38	9,262.17	35,054.43	44,316.60
2260 Instruction and Curriculum Development Services	56,034.59	294,181.65	350,216.24	95,541.90	361,596.39	457,138.29
2350 Legal and Accounting Services	6,042.84	28,724.89	34,767.73	6,075.88	22,995.32	29,071.20
2420 Medical Services	101,545.14	533,112.00	634,657.14	936.60	3,544.73	4,481.33
2440 Nursing Services				141,394.31	535,133.50	676,527.81
2700 Student Transportation Services	464,139.00	1,350,388.04	1,814,527.04	571,827.93	1,351,909.30	1,923,737.23
Total	\$845,765.57	\$3,350,927.56	\$4,196,693.13	\$1,116,614.95	\$3,413,758.78	\$4,530,373.73

LEA : 116191103 Berwick Area SD

Printed 10/29/2020 1:41:32 PM

(PRINCIPAL AMOUNTS ONLY)

GOVERNMENTAL FUNDS/ ACTIVITIES

	Short-Term Borrowing	General Obligation Bonds/Notes	Authority Building Obligations	Other Long-Term Debt	Other Post-Employment Benefits (OPEB)	Compensated Absences	Net Pension Liability	Total
1. Debt at Beginning of Fiscal Year		17,050,000.00	223,747.00		3,151,062.00	4,802,827.88	72,541,807.00	97,769,443.88
2. Additional Debt Incurred During Year					38,567.00			38,567.00
3. Retirements and Repayments		920,000.00	73,644.00			1,404,481.78	2,388,920.00	4,787,045.78
4. Debt at End of Fiscal Year		16,130,000.00	150,103.00		3,189,629.00	3,398,346.10	70,152,887.00	93,020,965.10
5. Accreted Interest at End Of Fiscal Year			21,467.60					21,467.60
6. Total Debt and Accreted Interest		16,130,000.00	171,570.60		3,189,629.00	3,398,346.10	70,152,887.00	93,042,432.70
7. Current Portion P&I - Due within 1 year		1,424,061.00	77,064.00					1,501,125.00
8. Interest Paid during current fiscal year		506,385.00	4,202.00					510,587.00

(PRINCIPAL AMOUNTS ONLY)

PROPRIETARY FUNDS

	Short-Term Borrowing	General Obligation Bonds/Notes	Authority Building Obligations	Other Long-Term Debt	Other Post-Employment Benefits (OPEB)	Compensated Absences	Net Pension Liability	Total
1. Debt at Beginning of Fiscal Year					28,938.00	1,690.00	666,193.00	696,821.00
2. Additional Debt Incurred During Year						7,530.00		7,530.00
3. Retirements and Repayments					2,567.00		84,080.00	86,647.00
4. Debt at End of Fiscal Year					26,371.00	9,220.00	582,113.00	617,704.00
5. Accreted Interest at End Of Fiscal Year								
6. Total Debt and Accreted Interest					26,371.00	9,220.00	582,113.00	617,704.00
7. Current Portion P&I - Due within 1 year								
8. Interest Paid during current fiscal year								

Total Principal and Interest Payments Made by Your School - All Funds

Function	Fund		Principal (910)	Principal (920)	Interest (830)	Total (Principal +Interest)	Misc Other Uses (990)
5110	10	General Fund	920,000.00	73,643.50	510,586.93	1,504,230.43	
5110	20	Special Revenue Funds					
5110	30	Capital Projects Funds					
5110	40	Debt Service Fund					
5110	90	Permanent Fund					
5120	10	General Fund					
5120	20	Special Revenue Funds					
5120	30	Capital Projects Funds					
5120	40	Debt Service Fund					

Total Debt Payments - Governmental Funds			\$920,000.00	\$73,643.50	\$510,586.93	\$1,504,230.43	
---	--	--	---------------------	--------------------	---------------------	-----------------------	--

Function	Fund		Principal (910)	Principal (920)	Interest (830)	Total (Principal +Interest)
5110	50	Enterprise Fund				
5110	60	Internal Service Fund				
5120	50	Enterprise Fund				
5120	60	Internal Service Fund				

Total Debt Payments - Proprietary Funds						
--	--	--	--	--	--	--

Debt Details
Governmental Funds/ Activities

Debt Category	Debt Issue Date (MM/YYYY)	Principal Amounts Only				Current Portion Due Within One Year (Principal and Interest)	Interest Paid During Fiscal Year
		Debt at Beginning of Fiscal Year	Additions	Reductions / Repayments	Debt at End of Fiscal Year		
General Obligation Bonds/Notes – CIB	05/2019	17,050,000.00		920,000.00	16,130,000.00	1,424,061.00	506,385.00
Authority Building Obligations – CAB	11/2014	223,747.00		73,644.00	150,103.00	77,064.00	4,202.00
Compensated Absences		4,802,827.88		1,404,481.78	3,398,346.10		
Other Post-Employment Benefits (OPEB)		3,151,062.00	38,567.00		3,189,629.00		
Net Pension Liability		72,541,807.00		2,388,920.00	70,152,887.00		
Totals for Debt Entered:		\$97,769,443.88	\$38,567.00	\$4,787,045.78	\$93,020,965.10	\$1,501,125.00	\$510,587.00

Bond Details
Proprietary Funds

Debt Category	Debt Issue Date (MM/YYYY)	Principal Amounts Only				Current Portion Due Within One Year (Principal and Interest)	Interest Paid During Fiscal Year
		Debt at Beginning of Fiscal Year	Additions	Reductions / Repayments	Debt at End of Fiscal Year		
Compensated Absences		1,690.00	7,530.00		9,220.00		
Other Post-Employment Benefits (OPEB)		28,938.00		2,567.00	26,371.00		
Net Pension Liability		666,193.00		84,080.00	582,113.00		
Totals for Debt Entered:		\$696,821.00	\$7,530.00	\$86,647.00	\$617,704.00		

LEA : 116191103 Berwick Area SD

Printed 10/29/2020 1:41:32 PM

Accreted Interest Detail
Governmental Funds/ Activities

Debt Category	Debt Issue Date (MM/YYYY)	Beginning Accreted Interest	Additions	Reductions	Ending Accreted Interest	Ending bond Principal	Ending Principal Plus Accreted Interest
Authority Building Obligations – CAB	11/2014	42,636.00		21,168.40	21,467.60	150,103.00	171,570.60
Totals for Debt Entered:		\$42,636.00		\$21,168.40	\$21,467.60	\$150,103.00	\$171,570.60

General Fund (10)

Section 1: Tuition/Purchased Services as Reported within Expenditure Detail

	Amount
Tuition Reported in General Fund Expenditures 1000-560	3,606,546.42
Purchased Services in General Fund Expenditures 1000-594 and 1000-597	393.97
Section 1 Total	\$3,606,940.39

Section 2: Tuition Paid to Institution Types During Fiscal Year

	Tuition Paid For Nonspecial Education	Tuition Paid For Special Education	Total
1 1306 Institutions			
2 Institutionalized Children's Programs		393.97	393.97
3 Juveniles Incarcerated in Adult Facilities		10,501.03	10,501.03
4 Residential Treatment Facilities			
5 Other Local Education Agencies	189,829.53	3,802.06	193,631.59
6 Brick and Mortar Charter Schools			
7 Cyber Charter Schools	581,301.91	334,921.91	916,223.82
8 Career and Technology Centers	1,581,775.02	274,174.98	1,855,950.00
9 Approved Private Schools		412,995.40	412,995.40
10 PA Chartered Schools for the Deaf and Blind			
11 Private Residential Rehabilitative Institutions	57,706.35	148,811.40	206,517.75
12 Juvenile Detention Centers			
13 Special Program Jointures			
14 Other Tuition Not Included Elsewhere In This Section	10,726.83		10,726.83
Section 2 Total	\$2,421,339.64	\$1,185,600.75	\$3,606,940.39

LEA : 116191103 Berwick Area SD

Printed 10/29/2020 1:42:04 PM

Fund	School	School Number	Local Personnel	Local Nonpersonnel	State Personnel	State Nonpersonnel	Federal Personnel	Federal Nonpersonnel	Total	Explanation
10	Berwick Area HS	1605	9,003,641.39	2,267,856.65	122.78	11,541.09	158,947.10	84,350.74	11,526,459.75	
	Berwick Area MS	6808	10,633,603.89	2,479,413.97	151.69	14,257.82	104,206.61	72,411.91	13,304,045.89	
	Nescopeck El Sch	6349	2,533,984.82	536,602.36	31.30	2,942.44	111,275.21	21,505.54	3,206,341.67	
	Salem El Sch	1597	4,615,352.60	1,026,174.09	58.13	5,464.21	484,251.62	39,936.42	6,171,237.07	
	West Berwick El Sch	8378	5,250,814.27	1,373,415.48	83.09	7,810.47	561,379.14	57,823.64	7,251,326.09	
Total			32,037,396.97	7,683,462.55	446.99	42,016.03	1,420,059.68	276,028.25	41,459,410.47	

	<u>Nonspecial Education</u>	<u>Special Education</u>
1000 Instruction		
1400 Other Instructional Programs - Elementary / Secondary	10,501.00	
Total Instruction	\$10,501.00	
TOTAL ACTUAL EXPENDITURES & OTHER FINANCING USES	\$10,501.00	

LEA : 116191103 Berwick Area SD

Printed 10/29/2020 1:43:01 PM

1000 Instruction

500 Other Purchased Services

561 Tuition To Other School Districts Within the State 10,501.00

Total Other Purchased Services \$10,501.00

Total 1000 Instruction \$10,501.00

LEA : 116191103 Berwick Area SD

Printed 10/29/2020 1:43:01 PM

1400 Other Instructional Programs - Elementary / Secondary	<u>Nonspecial Education</u>	<u>Special Education</u>
500 Other Purchased Services		
561 Tuition To Other School Districts Within the State	10,501.00	
Total Other Purchased Services	\$10,501.00	
Total 1400 Other Instructional Programs - Elementary / Secondary	\$10,501.00	

LEA : 116191103 Berwick Area SD

Printed 10/29/2020 1:43:01 PM

1440 Alternative Regular Education Programs	<u>Nonspecial Education</u>	<u>Special Education</u>
500 <u>Other Purchased Services</u>		
561 Tuition To Other School Districts Within the State	10,501.00	
Total Other Purchased Services	\$10,501.00	
Total 1440 Alternative Regular Education Programs	\$10,501.00	

LEA : 116191103 Berwick Area SD

Printed 10/29/2020 1:43:01 PM

1441 Adjudicated / Court-Placed Programs	<u>Nonspecial Education</u>	<u>Special Education</u>
500 Other Purchased Services		
561 Tuition To Other School Districts Within the State	10,501.00	
Total Other Purchased Services	\$10,501.00	
Total 1441 Adjudicated / Court-Placed Programs	\$10,501.00	